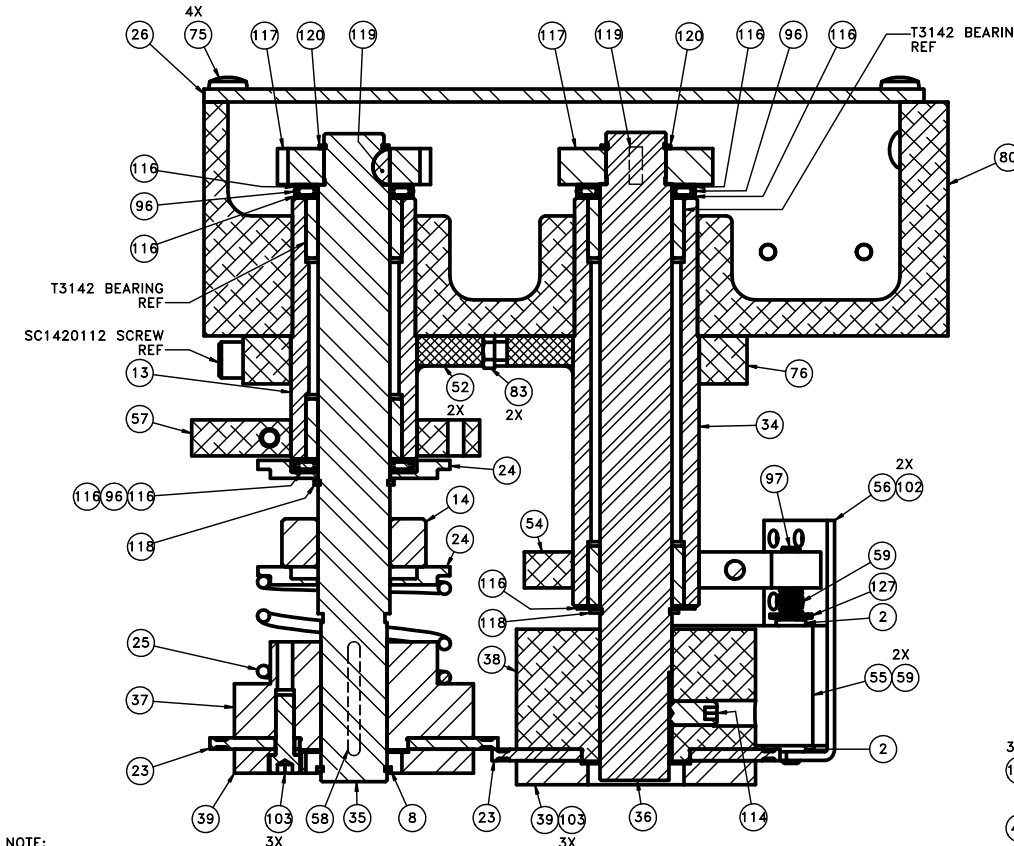
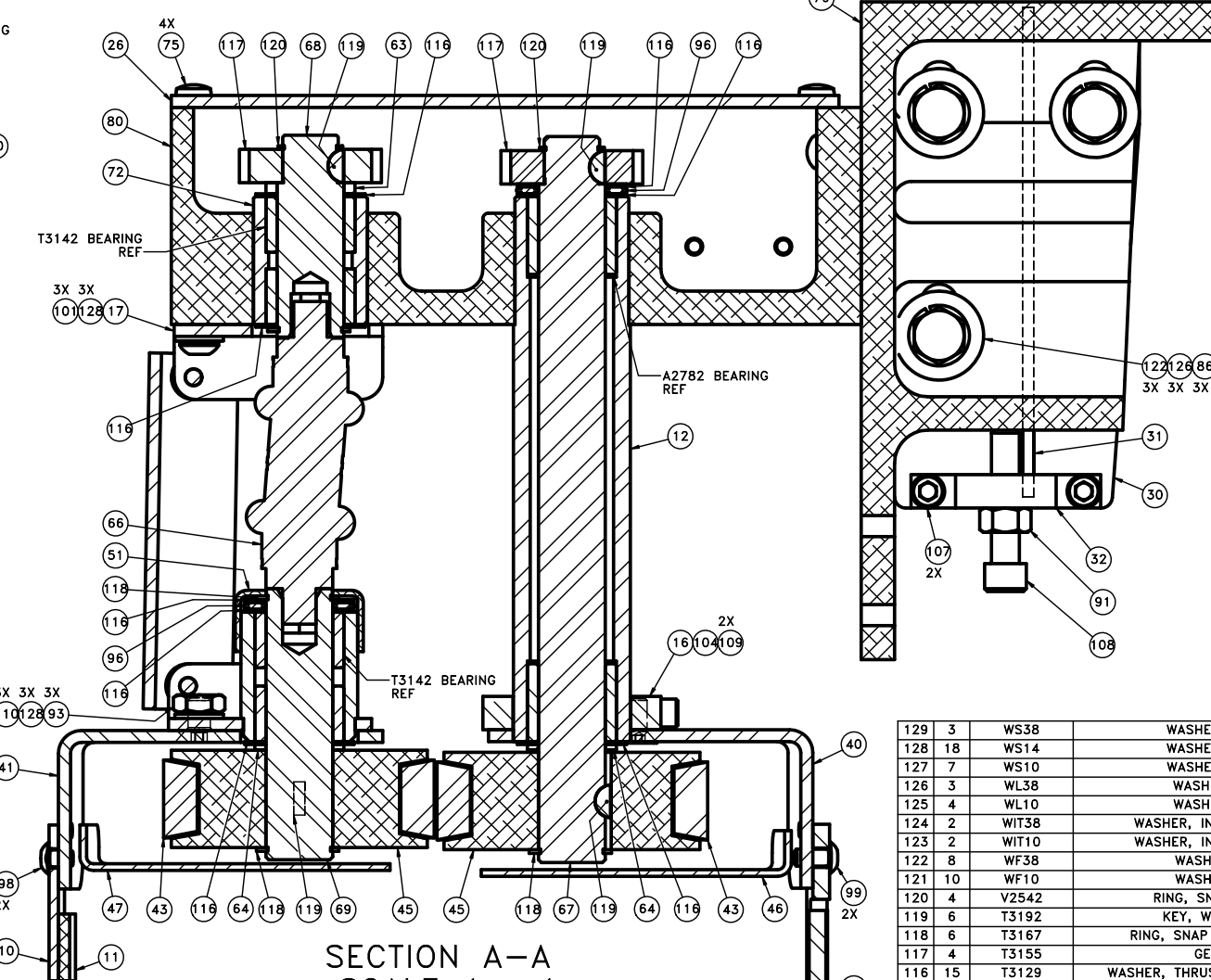


| REV | ECN | CHANGES        | DATE      | DR | CK |
|-----|-----|----------------|-----------|----|----|
| P1  | -   | PROTOTYPE PART | 4/05/2012 | DS |    |

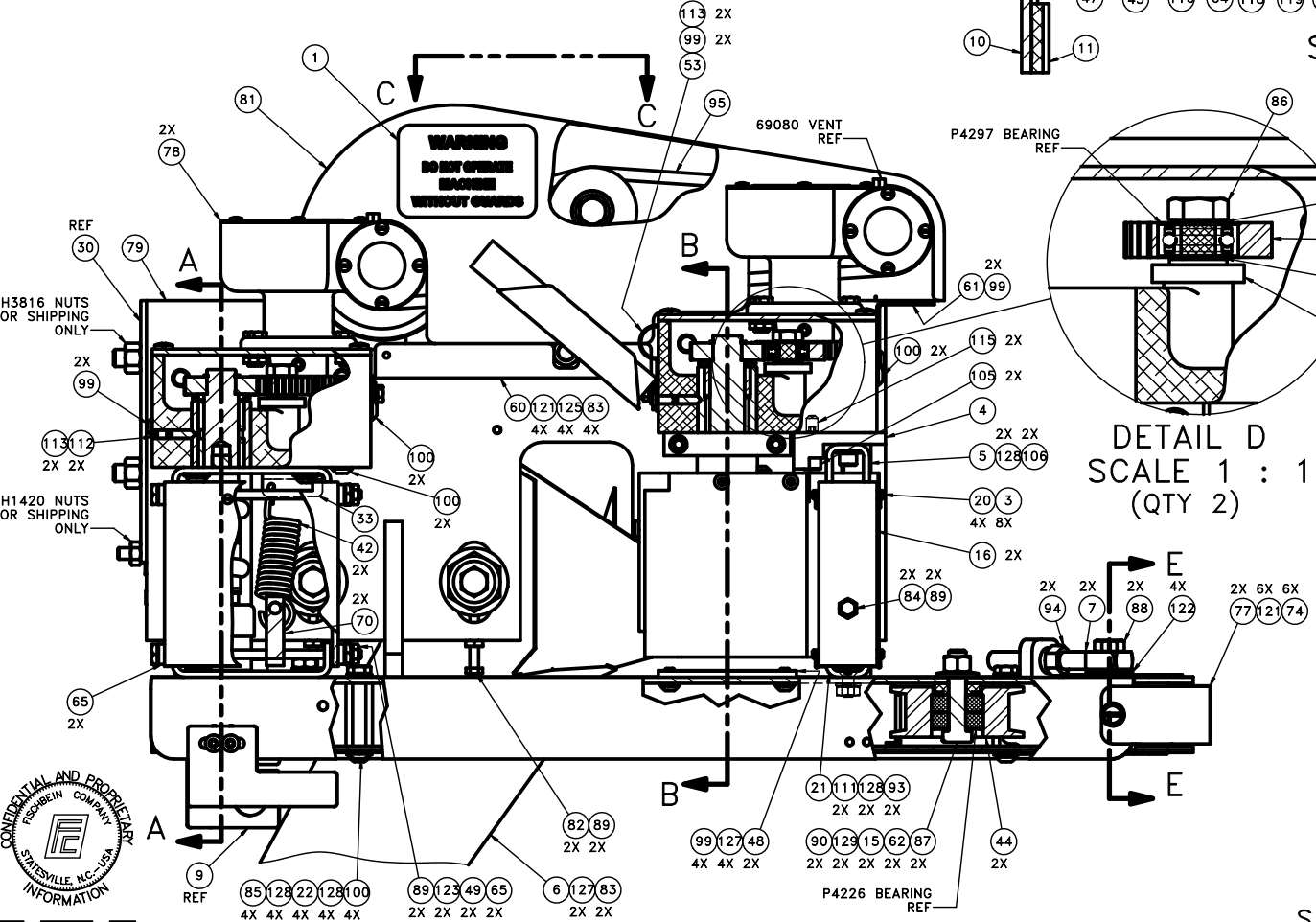


SECTION B-B  
SCALE 1 : 1

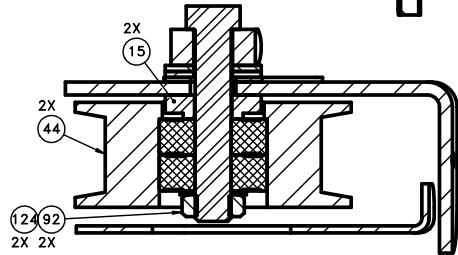
NOTE:  
SEE DOCUMENT 36812 BEFORE  
REPLACING THE TRIMMER KNIVES.



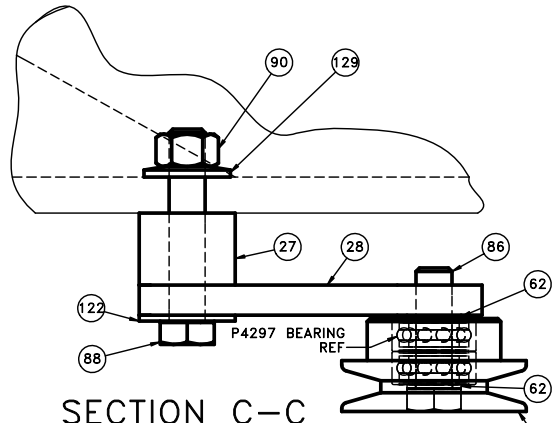
SECTION A-A  
SCALE 1 : 1



DETAIL D  
SCALE 1 : 1  
(QTY 2)



SECTION E-E  
SCALE 1 : 1

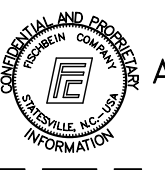


SECTION C-C  
SCALE 1 : 1

SHOWN WITH COMPONENTS MISSING

|     |    |            |                                     |
|-----|----|------------|-------------------------------------|
| 129 | 3  | WS38       | WASHER, SPRING 3/8                  |
| 128 | 18 | WS14       | WASHER, SPRING 1/4                  |
| 127 | 7  | WS10       | WASHER, SPRING #10                  |
| 126 | 3  | WL38       | WASHER, LOCK 3/8                    |
| 125 | 4  | WL10       | WASHER, LOCK #10                    |
| 124 | 2  | WIT38      | WASHER, INTERNAL TOOTH 3/8          |
| 123 | 2  | WIT10      | WASHER, INTERNAL TOOTH #10          |
| 122 | 8  | WF38       | WASHER, FLAT 3/8                    |
| 121 | 10 | WF10       | WASHER, FLAT #10                    |
| 120 | 4  | V2542      | RING, SNAP 5100-62-PP               |
| 119 | 6  | T3192      | KEY, WOODRUFF, #403                 |
| 118 | 6  | T3167      | RING, SNAP - 3/4" (5100-75)         |
| 117 | 4  | T3155      | GEAR, DRIVEN                        |
| 116 | 15 | T3129      | WASHER, THRUST .752 ID X 1.240 OD   |
| 115 | 2  | SS142038   | SCREW, SOC SET 1/4-20 X 3/8 BO      |
| 114 | 1  | SS142012   | SCREW, SOC SET 1/4-20 X 1/2 BO      |
| 113 | 4  | SS103258CP | SCREW, SOC SET #10-32 X 5/8 CP BO   |
| 112 | 2  | SS1032516  | SCREW, SOC SET #10-32 X 5/16 BO     |
| 111 | 2  | SF142058   | SCREW, SOC FLAT 1/4-20 X 5/8 BO     |
| 110 | 3  | SF142012   | SCREW, SOC FLAT 1/4-20 X 1/2 BO     |
| 109 | 2  | SF103212   | SCREW, SOC FLAT #10-32 X 1/2 BO     |
| 108 | 1  | SC51618112 | SCREW, SOC CAP 5/16-18 X 1 1/2 BOG5 |
| 107 | 2  | SC142078   | SCREW, SOC CAP 1/4-20 X 7/8 BO G5   |
| 106 | 2  | SC142058   | SCREW, SOC CAP 1/4-20 X 5/8 BO G5   |
| 105 | 2  | SC142034   | SCREW, SOC CAP 1/4-20 X 3/4 BO G5   |
| 104 | 1  | SC103278   | SCREW, SOC CAP #10-32 X 7/8 BO G8   |
| 103 | 6  | SC103258   | SCREW, SOC CAP #10-32 X 5/8 BO      |
| 102 | 2  | SB83238    | SCREW, SOC BTNN #8-32 X 3/8 BO      |
| 101 | 3  | SB142058   | SCREW, SOC BTNN 1/4-20 X 5/8 BO     |
| 100 | 10 | SB142038   | SCREW, SOC BTNN 1/4-20 X 3/8 BO     |
| 99  | 12 | SB103238   | SCREW, SOC BTNN #10-32 X 3/8 BO     |
| 98  | 2  | SB103214   | SCREW, SOC BTNN #10-32 X 1/4 BO     |
| 97  | 1  | PD316214   | PIN DOWEL 3/16 DIA X 2 1/4          |
| 96  | 5  | P4024      | BEARING, THRUST .752 ID X 1.240     |
| 95  | 1  | P2653      | BELT, V (3L280)                     |
| 94  | 2  | NL3816     | NUT, HEX LOCK 3/8-16 UNC            |
| 93  | 5  | NJ51618    | NUT, HEX JAM 5/16-18 UNC            |
| 92  | 2  | NJ3816     | NUT, HEX JAM 3/8-16 UNC             |
| 91  | 1  | NH51618    | NUT, HEX 5/16-18 UNC                |
| 90  | 3  | NH3816     | NUT, HEX 3/8-16 UNC                 |
| 89  | 6  | NH1032     | NUT, HEX #10-32 UNF                 |
| 88  | 3  | H38162     | BOLT, HEX HD 3/8-16 X 2 CZ G5       |
| 87  | 2  | H3816134   | BOLT, HEX HD 3/8-16 X 1 3/4 CZ G5   |
| 86  | 6  | H3816114   | BOLT, HEX HD 3/8-16 X 1 1/4 CZ G5   |
| 85  | 4  | H142058SS  | BOLT, HEX HD 1/4-20 X 5/8 CZ G5 SS  |
| 84  | 2  | H103278    | SCREW, HEX HD #10-32 X 7/8 CZ G8    |
| 83  | 8  | H103238    | SCREW, HEX HD #10-32 X 3/8 CZ G8    |
| 82  | 2  | H1032112   | SCREW, HEX HD #10-32 X 1 1/2 CZ     |
| 81  | 1  | C2640      | GUARD, BELT DRIVE                   |
| 80  | 2  | C2605      | HOUSING, DRIVE                      |
| 79  | 1  | C2601      | BRACKET, INFEEED MOUNTING           |

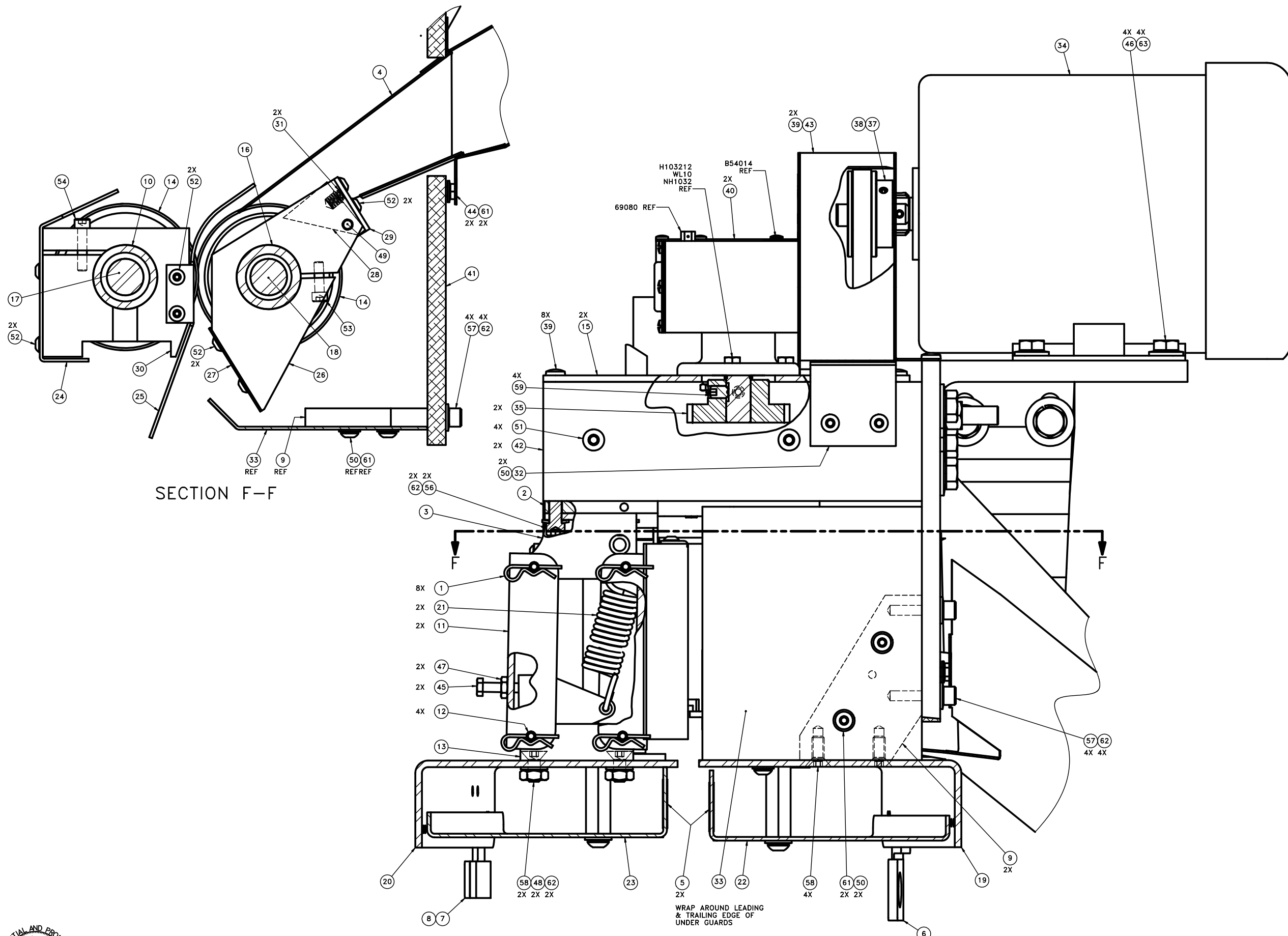
|    |     |         |                                       |
|----|-----|---------|---------------------------------------|
| 78 | 2   | B4273   | ASSY, GEAR BOX                        |
| 77 | 2   | B2695   | GUARD, BELT - FRONT                   |
| 76 | 1   | B2664   | SUB ASSY, RET. PLATE-DR. TUBES        |
| 75 | 8   | B103238 | SCREW, BINDER HD #10-32 X 3/8         |
| 74 | 6   | B103214 | SCREW, BINDER HD #10-32 X 1/4         |
| 73 | 1   | A4378   | CHANNEL, SWING                        |
| 72 | 1   | A4353   | ASSY, TUBE W/BEARINGS(UPPER)          |
| 71 | 2   | A4298   | ASSY, GEAR - IDLER                    |
| 70 | 2   | A4294   | LEVER, SPRING                         |
| 69 | 1   | A4291   | SHAFT, DRIVE - LOWER                  |
| 68 | 1   | A4288   | SHAFT, DRIVE - UPPER                  |
| 67 | 1   | A4285   | SHAFT, DRIVE BELT                     |
| 66 | 1   | A4269   | JOINT, UNIVERSAL - DOUBLE             |
| 65 | 4   | A4258   | BUSHING                               |
| 64 | 2   | A4213   | SPACER, PULLEY                        |
| 63 | 1   | A4212   | SPACER, GEAR                          |
| 62 | 8   | A3934   | WASHER, IDLER                         |
| 61 | 1   | A2777   | GUARD, SMALL                          |
| 60 | 1   | A2776   | GUARD, LARGE                          |
| 59 | 3   | A2774   | SPRING, BLOCK                         |
| 58 | 1   | A2772   | KEY, 1/8 SQX 1-3/16 ROUND ENDS        |
| 57 | 1   | A2762   | COLLAR, GUARD - LEFT                  |
| 56 | 1   | A2760   | BRACKET                               |
| 55 | 1   | A2759   | BLOCK                                 |
| 54 | 1   | A2756   | COLLAR, GUARD - RIGHT                 |
| 53 | 1   | A2737   | GUIDE, TAPE                           |
| 52 | 2   | A2729   | SPACER, DRIVE TUBE                    |
| 51 | 1   | A2728   | SEAL, THRUST BEARING                  |
| 50 | 2   | A2723   | ASS'Y, ROD - PIVOT                    |
| 49 | 2   | A2722   | PIVOT, HEX                            |
| 48 | 2   | A2711   | COVER, UPPER GUARD                    |
| 47 | 1   | A2705   | GUARD, UNDER-LEFT                     |
| 46 | 1   | A2704   | GUARD, UNDER-RIGHT                    |
| 45 | 2   | A2703   | PULLEY, DR 2.88D 3/4B 3/4FLAT         |
| 44 | 4   | A2702   | ASSY, PULLEY-IDLER W/BEARINGS         |
| 43 | 2   | A2701   | BELT, VARIABLE SPEED, CARRY THRU      |
| 42 | 2   | A2670   | SPRING, EXTENSION                     |
| 41 | 1   | A2663   | GUARD, LEFT (TAPER) MODIFIED QC       |
| 40 | 1   | A2662   | GUARD, RIGHT (TAPER) MODIFIED QC      |
| 39 | 2   | A2661   | PLATE, QUICK CHANGE KNIFE             |
| 38 | 1   | A2660   | HUB, FEED - RIGHT QUICK               |
| 37 | 1   | A2659   | HUB, KNIFE - LEFT QUICK               |
| 36 | 1   | A2658   | SHAFT, KNIFE - RIGHT QUICK            |
| 35 | 1   | A2657   | SHAFT, KNIFE - LEFT QUICK             |
| 34 | 1   | A2656   | ASSY, KNIFE DRIVE TUBE W/BEAR.QUICK   |
| 33 | 1   | A2655   | BRACKET, SPRING HOOK                  |
| 32 | 1   | A2649   | BLOCK, JACK                           |
| 31 | 1   | A2648   | KEY, 1/8 SQ X 5-1/2                   |
| 30 | 1   | A2647   | PLATE, SHIM                           |
| 29 | 1   | A2643   | ASSY, PULLEY-IDLER 1.92D              |
| 28 | 1   | A2642   | LEVER, IDLER                          |
| 27 | 1   | A2641   | SPACER, IDLER                         |
| 26 | 2   | A2633   | COVER, DRIVE                          |
| 25 | 1   | A2630   | SPRING, KNIFE                         |
| 24 | 2   | A2629   | SEAT, SPRING                          |
| 23 | 2   | A2626   | KNIFE, STANDARD PAPER FOR 400T        |
| 22 | 4   | A2624   | SPACER, HEX                           |
| 21 | 1   | A2622   | PIVOT, LOWER FRONT                    |
| 20 | 4   | A2621   | PIN, PIVOT FRONT                      |
| 16 | 2   | A2620   | CHANNEL, FRONT OUTER                  |
| 18 | 1   | A2615   | ASS'Y, LOWER REAR PIVOT               |
| 17 | 1   | A2614   | PIVOT, UPPER REAR                     |
| 16 | 1   | A2612   | COLLAR, GUARD                         |
| 15 | 6   | A2611   | SPACER, STEP                          |
| 14 | 1   | A2606   | COLLAR, SPRING PRESS ADJUST 3/4-16    |
| 13 | 1   | A2605   | ASSY, KNIFE DRIVE TUBE W/BEAR.SPRIN   |
| 12 | 1   | A2604   | TUBE, SHAFT DRIVE W/ BEARING          |
| 11 | 1   | A1794   | REFLECTOR, 3/4 X 3-3/16               |
| 10 | 1   | A1793   | BRACKET, REFLECTOR                    |
| 9  | REF | A1784   | BRACKET,PHOTOSEN.(HONEYWELL)(KNIFE)   |
| 8  | 1   | 69098   | RING, SNAP - EXTERNAL 11/16" SHAFT    |
| 7  | 2   | 66291   | EYE BOLT, SWING 3" LG                 |
| 6  | 1   | 63252   | WELDMENT, CHUTE (MOD)                 |
| 5  | 1   | 29125   | BRACKET,TRIMMER,PARALLEL BAR, A2700   |
| 4  | 1   | 29124   | BLOCK, TRIMMER TUBE DEFLECTION, A2700 |
| 3  | 8   | 18137   | PIN, COTTER-HAIR PIN                  |
| 2  | 2   | 11828   | RING, "O" 3/16 ID X 5/16 OD X 1/16W   |
| 1  | 1   | 10757   | LABEL, WARNING-GUARDS                 |



FISCHBEIN LLC  
FISCHBEIN-INGLETT  
151 WALKER ROAD, STATESVILLE, NC 28625  
PHONE: (704) 871-1159 FAX: (704) 872-3303

|             |          |                                      |           |
|-------------|----------|--------------------------------------|-----------|
| DATE        | 4/5/2012 | SCALE                                | 1:2       |
| DR          | DAVIDS   | DRAWING NUMBER                       | A2700NSQA |
| REV         |          | SHEET                                | 1 of 3    |
| PART NUMBER |          | DESCRIPTION                          |           |
| A2700NSQA   |          | ASSY, INFEEED TAPE SEW 23" A2626 QCA |           |

| REV | ECN | CHANGES     | DATE      | DR | CK |
|-----|-----|-------------|-----------|----|----|
| P1  | -   | SEE SHEET 1 | 4/05/2012 | DS |    |



SECTION F-F

| ITEM | QTY. | PART NUMBER | DESCRIPTION                           |
|------|------|-------------|---------------------------------------|
| 63   | 4    | WSS516      | WASHER, SPRING 5/16                   |
| 62   | 8    | WS14        | WASHER, SPRING 1/4                    |
| 61   | 4    | WS10        | WASHER, SPRING #10                    |
| 60   | 1    | T3167       | RING, SNAP - 3/4" (5100-75)           |
| 59   | 4    | SS142038    | SCREW, SOC SET 1/4-20 X 3/8 BO        |
| 58   | 6    | SF142058    | SCREW, SOC FLAT 1/4-20 X 5/8 BO       |
| 57   | 4    | SC142078    | SCREW, SOC CAP 1/4-20 X 7/8 BO G5     |
| 56   | 2    | SC142058    | SCREW, SOC CAP 1/4-20 X 5/8 BO G5     |
| 55   | 2    | SC142034    | SCREW, SOC CAP 1/4-20 X 3/4 BO G5     |
| 54   | 1    | SC103278    | SCREW, SOC CAP #10-32 X 7/8 BO G8     |
| 53   | 1    | SC103258    | SCREW, SOC CAP #10-32 X 5/8 BO        |
| 52   | 8    | S883238     | SCREW, SOC BTTN #8-32 X 3/8 BO        |
| 51   | 4    | SB142038    | SCREW, SOC BTTN 1/4-20 X 3/8 BO       |
| 50   | 4    | SB103238    | SCREW, SOC BTTN #10-32 X 3/8 BO       |
| 49   | 1    | PD316214    | PIN DOWEL 3/16 DIA X 2 1/4            |
| 48   | 2    | NJ51618     | NUT, HEX JAM 5/16-18 UNC              |
| 47   | 2    | NH1032      | NUT, HEX #10-32 UNF                   |
| 46   | 4    | H5161812    | BOLT, HEX HD 5/16-18 X 1/2 CZ G5      |
| 45   | 2    | H103278     | SCREW, HEX HD #10-32 X 7/8 CZ G8      |
| 44   | 2    | H103238     | SCREW, HEX HD #10-32 X 3/8 CZ G8      |
| 43   | 1    | C2640       | GUARD, BELT DRIVE                     |
| 42   | 2    | C2605       | HOUSING, DRIVE                        |
| 41   | 1    | C2601       | BRACKET, INFEED MOUNTING              |
| 40   | 2    | B4273       | ASSY, GEAR BOX                        |
| 39   | 10   | B103238     | SCREW, BINDER HD #10-32 X 3/8         |
| 38   | REF  | A4338       | ASSY, ADJ. PULLEY (58-70 FPM)         |
| 37   | REF  | A4335       | ASSY, ADJ. PULLEY (35-57 FPM)         |
| 36   | 2    | A4294       | LEVER, SPRING                         |
| 35   | 2    | A4222       | GEAR, DRIVE                           |
| 34   | REF  | A3625       | MOTOR, 1/4HP 230/460V 3/60 48TE       |
| 33   | 1    | A2778       | GUARD, KNIFE - INFEED                 |
| 32   | 1    | A2777       | GUARD, SMALL                          |
| 31   | 2    | A2774       | SPRING, BLOCK                         |
| 30   | 1    | A2762       | COLLAR, GUARD - LEFT                  |
| 29   | 1    | A2760       | BRACKET                               |
| 28   | 1    | A2759       | BLOCK                                 |
| 27   | 1    | A2757       | GUARD, KNIFE-RIGHT                    |
| 26   | 1    | A2756       | COLLAR, GUARD - RIGHT                 |
| 25   | 1    | A2713       | GUARD, KNIFE - LEFT INSIDE LONG       |
| 24   | 1    | A2712       | GUARD, KNIFE - LEFT LONG              |
| 23   | 1    | A2705       | GUARD, UNDER-LEFT                     |
| 22   | 1    | A2704       | GUARD, UNDER-RIGHT                    |
| 21   | 2    | A2670       | SPRING, EXTENSION                     |
| 20   | 1    | A2663       | GUARD, LEFT (TAPER) MODIFIED QC       |
| 19   | 1    | A2662       | GUARD, RIGHT (TAPER) MODIFIED QC      |
| 18   | 1    | A2658       | SHAFT, KNIFE - RIGHT QUICK            |
| 17   | 1    | A2657       | SHAFT, KNIFE - LEFT QUICK             |
| 16   | 1    | A2656       | ASSY, KNIFE DRIVE TUBE W/BEAR.QUICK   |
| 15   | 2    | A2633       | COVER, DRIVE                          |
| 14   | 2    | A2626       | KNIFE, STANDARD PAPER FOR 400T        |
| 13   | 1    | A2622       | PIVOT, LOWER FRONT                    |
| 12   | 4    | A2621       | PIN, PIVOT FRONT                      |
| 11   | 2    | A2620       | CHANNEL, FRONT OUTER                  |
| 10   | 1    | A2605       | ASSY, KNIFE DRIVE TUBE W/BEAR.SPRIN   |
| 9    | 2    | A2602       | BRACE                                 |
| 8    | 1    | A1794       | REFLECTOR, 3/4 X 3-3/16               |
| 7    | 1    | A1793       | BRACKET, REFLECTOR                    |
| 6    | 1    | A1784       | BRACKET,PHOTOSEN.(HONEYWELL)(KNIFE)   |
| 5    | 2    | 85405       | TAPE UHMW-1 WIDE X .010 THK           |
| 4    | 1    | 63252       | WELDMENT, CHUTE (MOD)                 |
| 3    | 1    | 29125       | BRACKET,TRIMMER,PARALLEL BAR, A2700   |
| 2    | 1    | 29124       | BLOCK, TRIMMER TUBE DEFLECTION, A2700 |
| 1    | 8    | 18137       | PIN, COTTER-HAIR PIN                  |

WRAP AROUND LEADING & TRAILING EDGE OF UNDER GUARDS

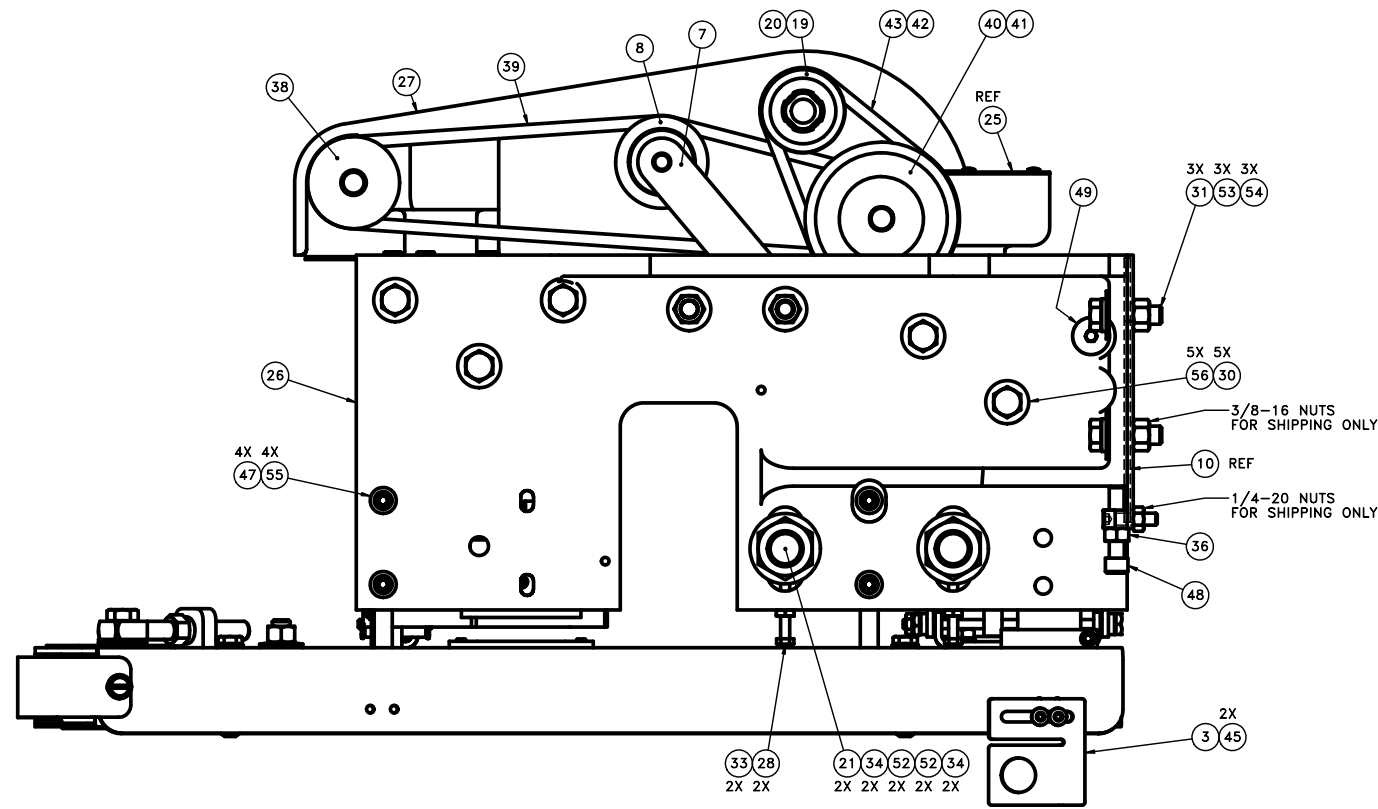


|                                                                                    |                |                                              |  |                                           |  |
|------------------------------------------------------------------------------------|----------------|----------------------------------------------|--|-------------------------------------------|--|
| FISCHBEIN CO. WORKMANSHIP STANDARD ENG-01 IS AN INTEGRAL COMPONENT OF THIS DRAWING |                | MATERIAL: SEE BOM                            |  | NAME: ASSY, INFEED TAPE SEW 23" A2626 QCA |  |
| DR: DAVIDS                                                                         | DATE: 4/5/2012 | FINISH: -                                    |  | PART NUMBER: A2700NSQA                    |  |
| BREAK ALL SHARP EDGES REMOVE ALL BURRS                                             |                | DIMENSIONAL TOLERANCES:                      |  | SCALE: 1:1                                |  |
| ALL TOLERANCES NON-ACCUMULATIVE                                                    |                | DECIMAL .XXX ±.005                           |  | DRAWING NUMBER: A2700NSQA P1              |  |
|                                                                                    |                | FRACTIONAL ±.030                             |  | SHEET: 2 of 3                             |  |
|                                                                                    |                | ANGLES ±.50 MIN (UNLESS OTHERWISE SPECIFIED) |  |                                           |  |

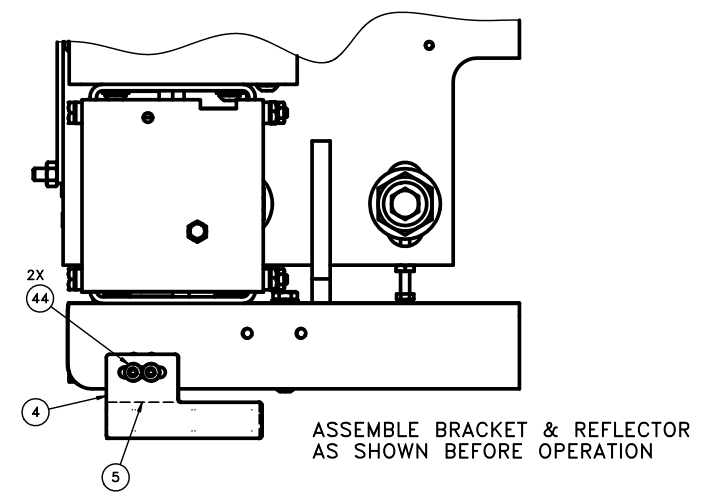
FISCHBEIN LLC  
FISCHBEIN-INGLETT

151 WALKER ROAD STATESVILLE, NC 28625  
PHONE: (704) 871-1159 FAX: (704) 872-3303

| REV | ECN | CHANGES     | DATE      | DR | CK |
|-----|-----|-------------|-----------|----|----|
| P1  | -   | SEE SHEET 1 | 4/05/2012 | DS |    |

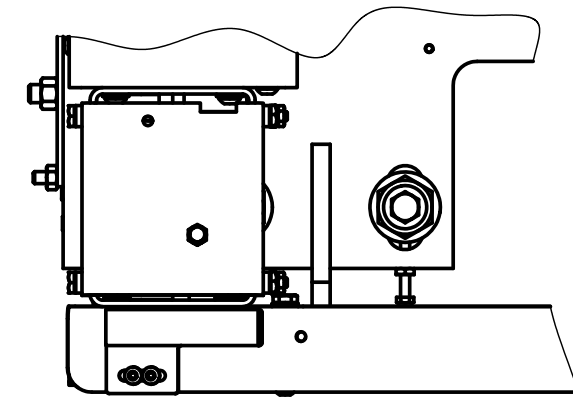


SECTION G-G  
ROTATED

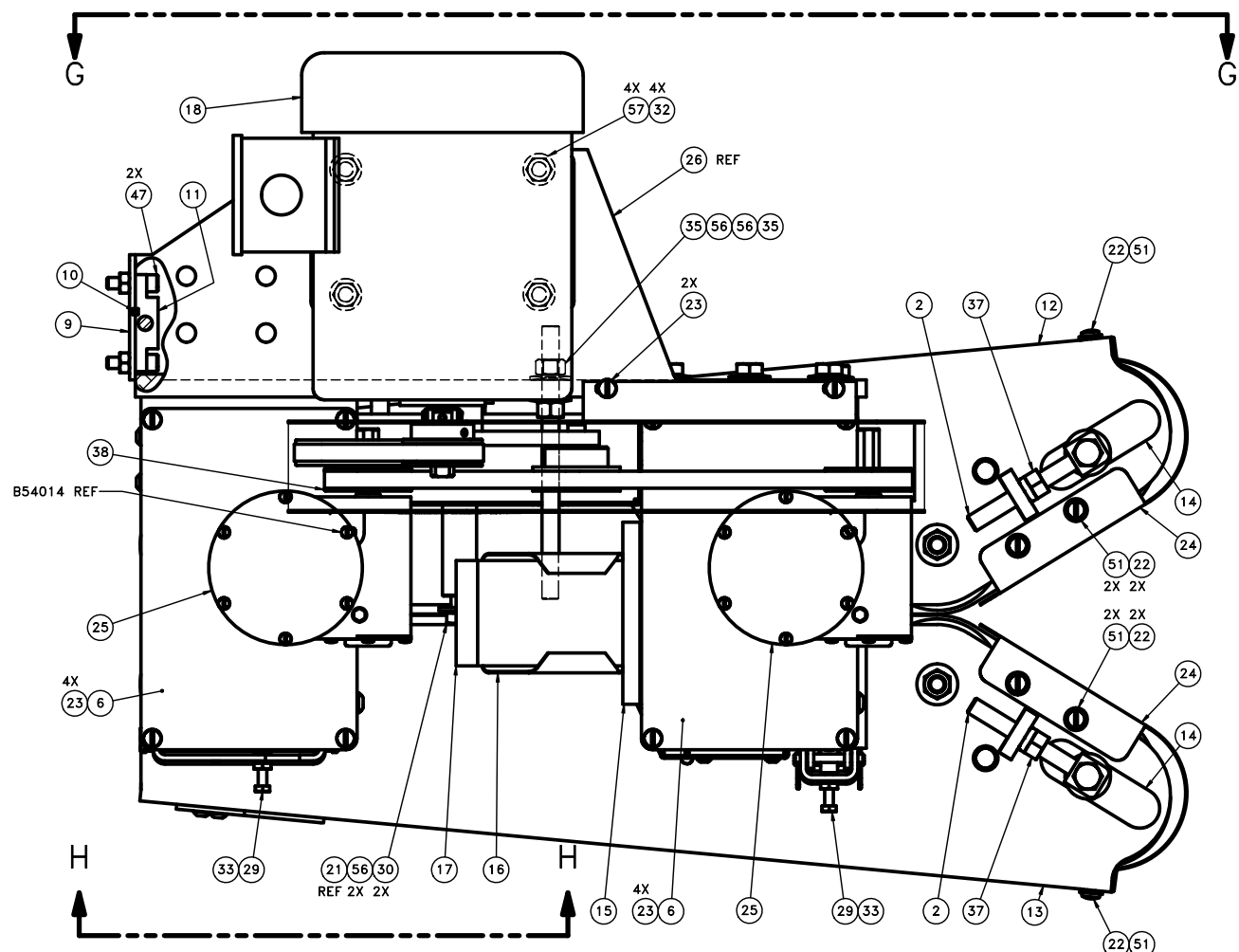


ASSEMBLE BRACKET & REFLECTOR  
AS SHOWN BEFORE OPERATION

SECTION H-H



ASSEMBLE BRACKET & REFLECTOR  
AS SHOWN FOR SHIPPING ONLY



|    |     |            |                                       |
|----|-----|------------|---------------------------------------|
| 57 | 4   | WS516      | WASHER, SPRING 5/16                   |
| 56 | 9   | WS38       | WASHER, SPRING 3/8                    |
| 55 | 4   | WS14       | WASHER, SPRING 1/4                    |
| 54 | 3   | WL38       | WASHER, LOCK 3/8                      |
| 53 | 3   | WF38       | WASHER, FLAT 3/8                      |
| 52 | 4   | WF34       | WASHER, FLAT 3/4                      |
| 51 | 6   | WF10       | WASHER, FLAT #10                      |
| 50 | 1   | T3167      | RING, SNAP - 3/4" (5100-75)           |
| 49 | 1   | SF38161    | SCREW, SOC FLAT 3/8-16 X 1 BO         |
| 48 | 1   | SC51618112 | SCREW, SOC CAP 5/16-18 X 1 1/2 BOG5   |
| 47 | 6   | SC142078   | SCREW, SOC CAP 1/4-20 X 7/8 BO G5     |
| 46 | 2   | SC142034   | SCREW, SOC CAP 1/4-20 X 3/4 BO G5     |
| 45 | REF | SB103238   | SCREW, SOC BTTN #10-32 X 3/8 BO       |
| 44 | 2   | SB103214   | SCREW, SOC BTTN #10-32 X 1/4 BO       |
| 43 | REF | P4229-130  | BELT, DRIVE 3L130 (35-47 FPM)         |
| 42 | REF | P4229-120  | BELT, DRIVE 3L120 (48-70 FPM)         |
| 41 | REF | P4206      | PULLEY, 2.4D 2.2PD 1/2 B (48-70 FPM)  |
| 40 | REF | P2654      | PULLEY, 3.17D 1/2 BORE (35-47 FPM)    |
| 39 | 1   | P2653      | BELT, V (3L280)                       |
| 38 | 2   | P2645      | PULLEY, 1.92D X 1.75PD X 1/2 BORE     |
| 37 | 2   | NL3816     | NUT, HEX LOCK 3/8-16 UNC              |
| 36 | 1   | NH51618    | NUT, HEX 5/16-18 UNC                  |
| 35 | 2   | NH3816     | NUT, HEX 3/8-16 UNC                   |
| 34 | 4   | NH3416     | NUT, HEX 3/4-16 UNF                   |
| 33 | 4   | NH1032     | NUT, HEX #10-32 UNF                   |
| 32 | 4   | H5161812   | BOLT, HEX HD 5/16-18 X 1/2 CZ G5      |
| 31 | 3   | H3816114   | BOLT, HEX HD 3/8-16 X 1 1/4 CZ G5     |
| 30 | 7   | H38161     | BOLT, HEX HD 3/8-16 X 1 CZ G5         |
| 29 | 2   | H103278    | SCREW, HEX HD #10-32 X 7/8 CZ G8      |
| 28 | 2   | H1032112   | SCREW, HEX HD #10-32 X 1 1/2 CZ       |
| 27 | 1   | C2640      | GUARD, BELT DRIVE                     |
| 26 | 1   | C2601      | BRACKET, INFEED MOUNTING              |
| 25 | 2   | B4273      | ASSY, GEAR BOX                        |
| 24 | 2   | B2695      | GUARD, BELT - FRONT                   |
| 23 | 10  | B103238    | SCREW, BINDER HD #10-32 X 3/8         |
| 22 | 6   | B103214    | SCREW, BINDER HD #10-32 X 1/4         |
| 21 | 2   | A4814      | ROD, MOUNT - FOLDER                   |
| 20 | REF | A4338      | ASSY, ADJ. PULLEY (58-70 FPM)         |
| 19 | REF | A4335      | ASSY, ADJ. PULLEY (35-57 FPM)         |
| 18 | REF | A3625      | MOTOR, 1/4HP 230/460V 3/60 48TE       |
| 17 | 1   | A2741      | WAX, TAPE LUBRICATOR (4 PCS/BOX)      |
| 16 | 1   | A2740      | WELDMENT, SLIDE-TAPE LUBRICATOR       |
| 15 | 1   | A2737      | GUIDE, TAPE                           |
| 14 | 2   | A2727      | COVER, BEARING - INFEED               |
| 13 | 1   | A2663      | GUARD, LEFT (TAPER) MODIFIED QC       |
| 12 | 1   | A2662      | GUARD, RIGHT (TAPER) MODIFIED QC      |
| 11 | 1   | A2649      | BLOCK, JACK                           |
| 10 | 1   | A2648      | KEY, 1/8 SQ X 5-1/2                   |
| 9  | 1   | A2647      | PLATE, SHIM                           |
| 8  | 1   | A2643      | ASSY, PULLEY-IDLER 1.92D              |
| 7  | 1   | A2642      | LEVER, IDLER                          |
| 6  | 2   | A2633      | COVER, DRIVE                          |
| 5  | 1   | A1794      | REFLECTOR, 3/4 X 3-3/16               |
| 4  | 1   | A1793      | BRACKET, REFLECTOR                    |
| 3  | REF | A1784      | BRACKET,PHOTOSEN.(HONEYWELL)(KNIFE)   |
| 2  | 2   | 66291      | EYE BOLT, SWING 3" LG                 |
| 1  | 1   | 29124      | BLOCK, TRIMMER TUBE DEFLECTION, A2700 |



|                                                                                    |                |                                              |  |                                           |  |
|------------------------------------------------------------------------------------|----------------|----------------------------------------------|--|-------------------------------------------|--|
| FISCHBEIN CO. WORKMANSHIP STANDARD ENG-01 IS AN INTEGRAL COMPONENT OF THIS DRAWING |                | MATERIAL: SEE BOM                            |  | NAME: ASSY, INFEED TAPE SEW 23" A2626 QCA |  |
| DR: DAVIDS                                                                         | DATE: 4/5/2012 | FINISH: -                                    |  | PART NUMBER: A2700NSQA                    |  |
| BREAK ALL SHARP EDGES REMOVE ALL BURRS                                             |                | DIMENSIONAL TOLERANCES:                      |  | SCALE: 1:2                                |  |
| ALL TOLERANCES NON-ACCUMULATIVE                                                    |                | DECIMAL .XXX ±.005                           |  | DRAWING NUMBER: A2700NSQA P1              |  |
|                                                                                    |                | FRACTIONAL .XX ±.030                         |  | SHEET: 3 of 3                             |  |
|                                                                                    |                | ANGLES ±.50 MIN (UNLESS OTHERWISE SPECIFIED) |  |                                           |  |

FISCHBEIN LLC  
FISCHBEIN-INGLETT  
151 WALKER ROAD STATESVILLE, NC 28682  
PHONE: (704) 871-1159 FAX: (704) 872-3303