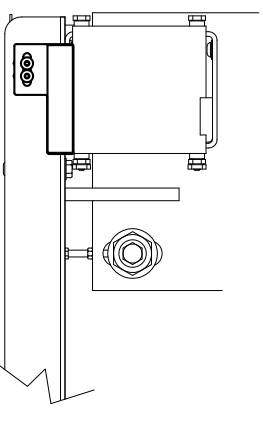
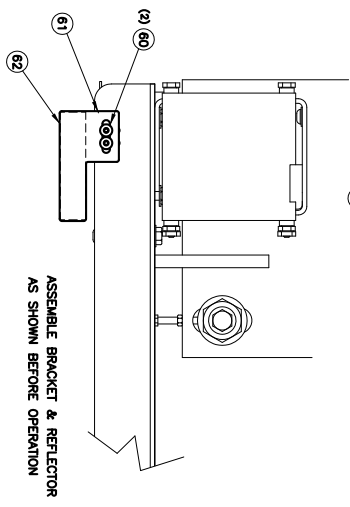
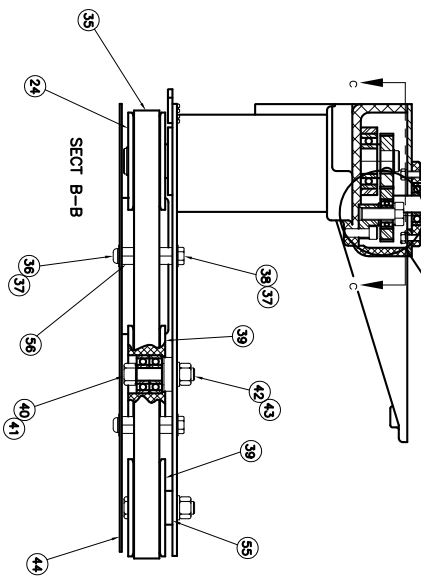
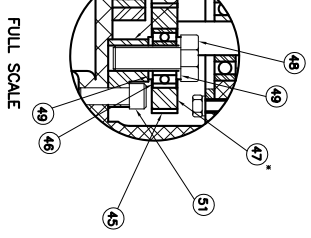
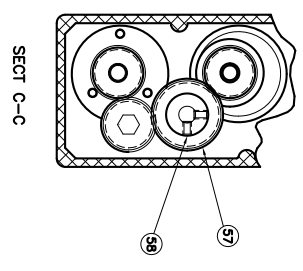
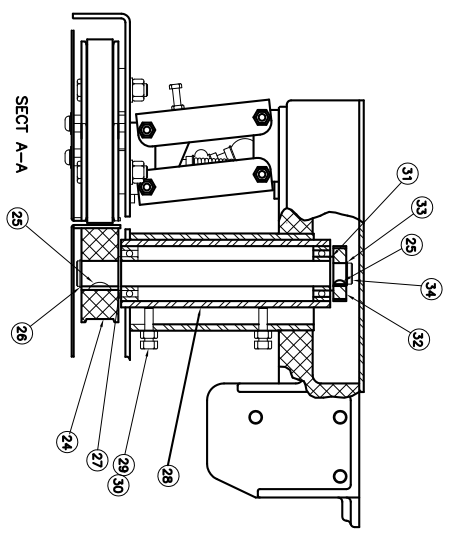
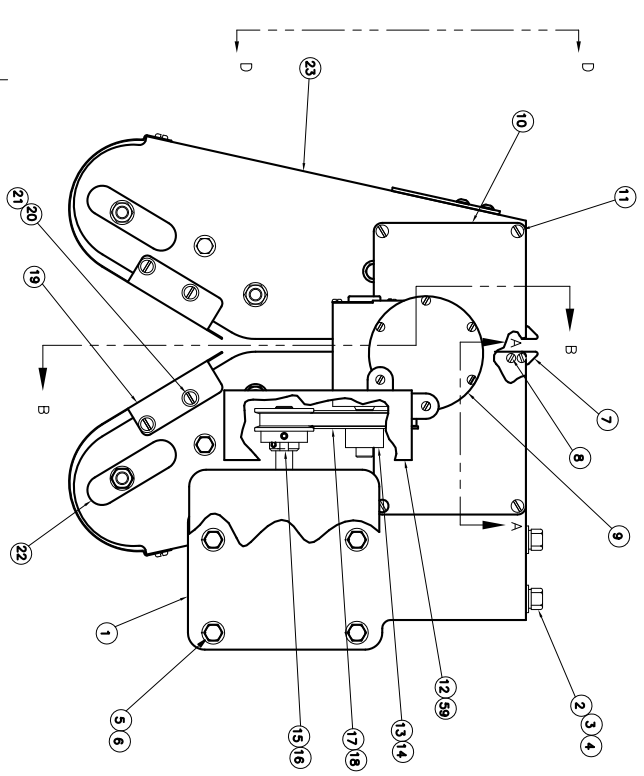


| REV | CDN | REV SHEET 1 | CHANGES | DATE | BY | CHK |
|-----|----------|-------------|----------------|------|-----|-----|
| V | 07/1992 | SEC SHEET 1 | (WMS H5161834) | 6/07 | MJA | RT |
| W | 08/31/91 | CHG ITEM 5 | (WMS H5161834) | 1/09 | MJA | |

* CUSTOMER USE

| | | | | |
|----|-----|--------------------------------------|---------------------------------------|---|
| 62 | 1 | A1794 | REFLECTOR | A |
| 61 | 1 | A1793 | BRACKET, REFLECTOR | A |
| 60 | 2 | BRACKET SCREW, SOC BTN #10-.32 X 1/4 | A | |
| 59 | 1 | 10757 | LABEL, WARNING GUARDS | A |
| 58 | 2 | ISAHARA SCREW, SOC SET 1/4-20 X 3/8 | A | |
| 57 | 1 | A4222 | GEAR, DRIVE | A |
| 56 | 2 | A4221 | GEAR, DRIVE | A |
| 55 | 2 | A4220 | WASHER, HEX | A |
| 54 | 2 | A4219 | SPACER, HEX | A |
| 53 | REF | NH1020 | NUT, HEX #10 | A |
| 52 | REF | H10208 | SCREW, HEX 10-32 X 5/8 | A |
| 51 | 2 | SC10204 | SCREW, SOC CAP 10-32 X 5/8 | A |
| 50 | 1 | A4377 | MOUNT, GEAR-DLER | A |
| 49 | 2 | 10215 | WASHER, THRUST | A |
| 48 | 1 | H38161 | BOLT, HEX 3/8-16 X 1 | A |
| 47 | 1 | A4298 | ASSY, GEAR-DLER | A |
| 46 | 1 | 13145-1 | BEARING, BALL (DOLER GEAR) | A |
| 45 | 1 | 13145-1 | GEAR, DOLER | A |
| 44 | 1 | 04382 | GUARD, UNDER-RIGHT | B |
| 43 | 2 | US38 | WASHER, SPRING 3/8 | A |
| 42 | 2 | NH3216 | NUT, HEX 3/8 | A |
| 41 | 2 | A2824 | WASHER, DOLER | A |
| 40 | 2 | H38129 | BOLT, HEX 3/8-16 X 1 3/4 | A |
| 39 | 2 | A4394 | ASSY, DOLER PULLEY W/BKRS | B |
| 38 | 2 | H14208 | SCREW, HEX 1/4-20 X 5/8 | A |
| 37 | 4 | WS14 | WASHER, SPRING 1/4 | A |
| 36 | 2 | S814204 | SCREW, SOC BTN 1/4-20 X 3/8 | A |
| 35 | 1 | P4390 | BELT, TIMING | A |
| 34 | 1 | A4285 | SHAFT, DRIVE-BELT | A |
| 33 | 1 | V2842 | RING, SHAP | A |
| 32 | 1 | 13155 | GEAR, DRIVE | A |
| 31 | 1 | A4212 | SPACER, GEAR | A |
| 30 | 4 | NH1420 | NUT, HEX JAM 1/4-20 | A |
| 29 | 1 | H14207 | SCREW, HEX 1/4-20 X 7/8 | A |
| 28 | 1 | A4355 | ASSY, TUBE SPINDLE (FIXED) W/BEARING | A |
| 27 | 1 | A4213 | SPACER, PULLEY | A |
| 26 | 1 | 13167 | RING, SHAP | A |
| 25 | 2 | 13192 | KEY, WOODRUFF | A |
| 24 | 1 | A4393 | PULLEY, DRIVE 2.88 OD X .75 BORE | B |
| 23 | - | - | ASSY, PRINT #1 | A |
| 22 | 1 | A2727 | COVER, BEARING | A |
| 21 | 3 | WF10 | WASHER, FLAT #10 | A |
| 20 | 3 | B10214 | SCREW, BTN 10-32 X 1/4 | A |
| 19 | 1 | B4384 | GUARD, BELT-FRONT | B |
| 18 | REF | PLATE-18 | BELT, DRIVE-1" (35-47 FPM) | A |
| 17 | REF | PLATE-18 | BELT, DRIVE-1.2" (48-70 FPM) | A |
| 16 | REF | A4335 | ASSY, ADJUST PULLEY (35-47 FPM) | A |
| 15 | REF | A4338 | ASSY, ADJUST PULLEY (48-70 FPM) | A |
| 14 | REF | P4207 | PULLEY, 3.7/8 OD 1/2 BORE (35-47 FPM) | A |
| 13 | REF | P4206 | PULLEY, 2.4 OD 1/2 BORE (48-70 FPM) | A |
| 12 | REF | C4225 | GUARD, BELT-TOP FEED | B |
| 11 | 6 | B10328 | SCREW, BTN 10-32 X 3/8 | B |
| 10 | 1 | A4217 | COVER, HOUSING | B |
| 9 | 1 | A4273 | ASSEMBLY, BOX-GEAR | C |
| 8 | 2 | B54014 | SCREW, BTN 5-40 X 1/4 | A |
| 7 | 1 | A4231 | FINGER, GUIDE | A |
| 6 | 4 | WF516 | WASHER, FLAT 5/16 | A |
| 5 | 4 | H61818 | SCREW, HEX 5/16-18 X 1/2 | A |
| 4 | 3 | WF328 | WASHER, FLAT 3/8 | A |
| 3 | 3 | WL328 | WASHER, LOCK 3/8 | A |
| 2 | 3 | H38114 | BOLT, HEX 3/8-16 X 1 1/4 | A |
| 1 | 1 | C4381 | SUB, ASSY HOUSING | C |



FISCHBEIN LLC
 10000 W. 10th Ave., Suite 100
 Denver, CO 80202
 Phone: (303) 751-1111
 Fax: (303) 751-1112
 Email: sales@fischbein.com

DATE: 08/22/94
 BY: JSC
 CHK: JSC

REV: 2
 PART: D4380 W