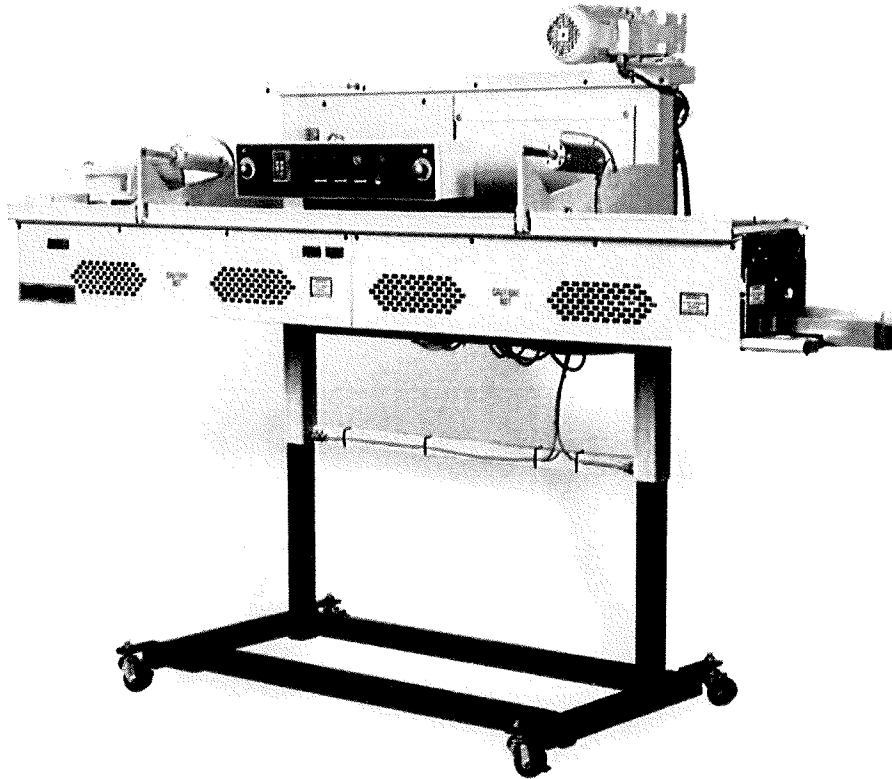


FISCHBEIN®

B A G C L O S I N G

OPERATOR'S MANUAL



FISCHBEIN® PILS-300 Poly Inner Liner Heat Sealer

Rev. A 6/2004
Part No. 35067

**FISCHBEIN® CO. MODEL PILS 300
OPERATOR'S MANUAL**

14 ASSEMBLY DRAWINGS AND PARTS LISTS

DESCRIPTION	GROUP No.	DRAWING No.	PAGE
ASSY, FRAME PILS 300 (Parts List)	1 of 2	50000	81-82
ASSY, FRAME PILS 300 (Drawing)	1 of 2	50000	83
ASSY, FRAME PILS 300 (Drawing)	2 of 2	50000	84
ASSY, FIXED CHANNEL REAR PILS 300 (Parts List)	1 of 2	50002	85-86
ASSY, FIXED CHANNEL REAR PILS 300 (Drawing)	1 of 2	50002	87
ASSY, FIXED CHANNEL REAR PILS 300 (Drawing)	2 of 2	50002	88
ASSY, SWING CHANNEL FRONT PILS 300 (Parts List)	1 of 2	50003	89-90
ASSY, SWING CHANNEL FRONT PILS 300 (Drawing)	1 of 2	50003	91
ASSY, SWING CHANNEL FRONT PILS 300 (Drawing)	2 of 2	50003	92
ASSY, FRONT PINCH PILS 300 (Parts List)	1 of 1	50004	94
ASSY, FRONT PINCH PILS 300 (Drawing)	1 of 1	50004	95
ASSY, REAR PINCH PILS 300 (Parts List)	1 of 1	50005	97
ASSY, REAR PINCH PILS 300 (Drawing)	1 of 1	50005	98
ASSY, FRONT PTP PILS 300 (Parts List)	1 of 1	50006	100
ASSY, FRONT PTP PILS 300 (Drawing)	1 of 1	50006	101
ASSY, REAR PTP PILS 300 (Parts List)	1 of 1	50007	103
ASSY, REAR PTP PILS 300 (Drawing)	1 of 1	50007	104
ASSY, INFEED, FRONT, PILS 300 (Parts List)	1 of 1	50008	106
ASSY, INFEED, FRONT, PILS 300 (Drawing)	1 of 1	50008	107
ASSY, INFEED, REAR PILS 300 (Parts List)	1 of 1	50011	109
ASSY, INFEED, REAR PILS 300 (Drawing)	1 of 1	50011	110
ASSY, SHROUDING PILS 300 (Parts List)	1 of 2	50009	112
ASSY, SHROUDING PILS 300 (Drawing)	1 of 2	50009	113
ASSY, SHROUDING PILS 300 (Drawing)	2 of 2	50009	114
ASSY, PNEU. PILS 300 (Parts List)	1 of 1	50010	116
ASSY, PNEU. PILS 300 (Drawing)	1 of 1	50010	117
ASSY, ELEC, PILS 300, CONTROL, S (Parts List)	1 of 1	50060	119
ASSY, ELEC, PILS 300, CONTROL, S (Drawing)	1 of 1	50060	120

**FISCHBEIN® CO. MODEL PILS 300
OPERATOR'S MANUAL**

Parts List for Drawing 50000-Rev. A

Item	Quantity	Part No.	Description
1	1	17489	SUPPORT, ACME SCREW
2	10-ft	24019	CHAIN, #40-1/2 P S STRAND 111 LINKS
3	1	50100	ASSY, FRAME PILS 300
4			
5	1	50050	PLATE, PNEUMATIC MOUNTING PILS 300
6	1	50053	CHANNEL, FIXED, REAR - PILS 300
7	1	50054	CHANNEL, SWING, FRONT - PILS 300
8	1	50066	ENC, PILS/DRC 300, 24x24x8 LT GREY
9			
10			
11	1	50091	GUARD, TOP PLATE CHAIN, LONG
12	1	50092	GUARD, TOP PLATE CHAIN, SHORT
13			
14			
15			
16	2	67203	SPROCKET, #40 19T, 1.0 ID (40BS19)
17	1	A5136	TENSIONER, CHAIN - ELEVATING
18	1	A5142	BOLT, SHOLDER 3/8 DIA x 1 LG
19	2	A5614	ROD, CLEVIS - AIR CYLINDER
20	2	A5615	CYLINDER, AIR
21	1	A5616	PIN, QUICK RELEASE - PIVOT
22	2	A5648	PIN (REAR)
23	2	A5649	PIN, COTTER HAIR 5/16 x 3/8
24			
25	2	A6288	SCREW, 3/8 SHOLDER BOLT 3/4"
26	2	B2149	LINK, CONNECTING
27	8	H1213114	BOLT, HEX 1/2-13 x 1 1/4 CZ G5
28	2	H142012	BOLT, HEX HD 1/4-20 x 1/2 CZ G5
29	4	H516181	BOLT, HEX HD 5/16-18 x 1
30	1	H38162	BOLT, HEX HD 3/8-16 x 2 FT CZ G5
31	2	H5161858	BOLT, HEX HD 5/16-18 x 5/8 CZ
32	4	NH3816	NUT, HEX 3/8-16 UNC-2B
33	8	NJ1213	NUT, HEX JAM 1/2-13 UNC-2B
34			
35	1	NJ3816	NUT, HEX JAM 3/8-16 UNC-2B
36	2	NJ51618	NUT, HEX JAM 5/16-18 UNC-2B
37	2	PS14212	PIN SPRING 1/4 x 2 1/2
38	4	SB38161SS	SCREW, SOC BTTN 3/8-16 x 1 SS

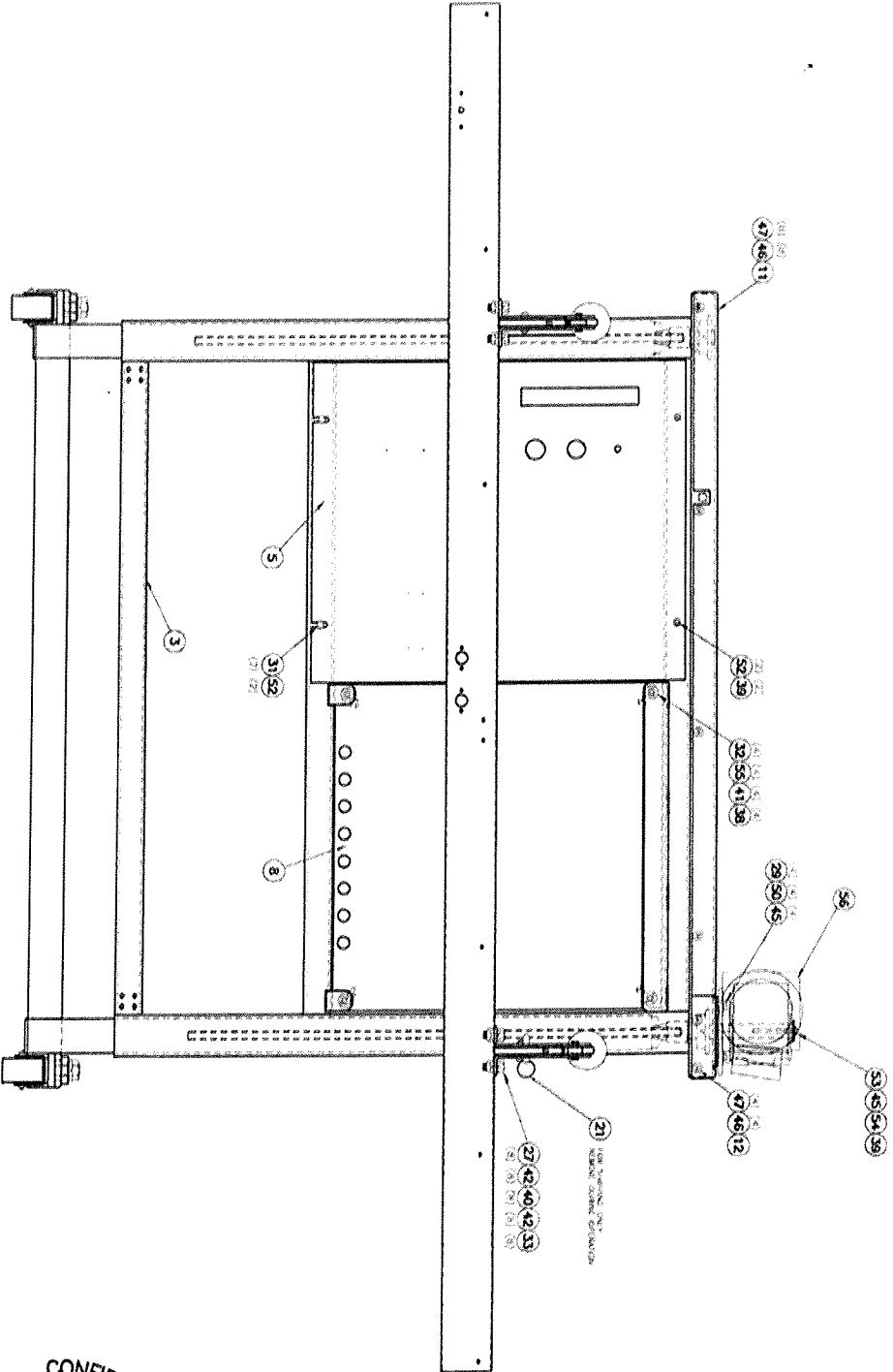
**FISCHBEIN® CO. MODEL PILS 300
OPERATOR'S MANUAL**

Parts List for Drawing 50000-Rev. A (cont.)

Item	Quantity	Part No.	Description
39	3	SB5161812SS	SCREW, SOC BTTN 5/16-18 x 1/2 SS
40	8	WF12	WASHER, FLAT 1/2
41	4	WF38SS	WASHER, FLAT 3/8 SS
42	16	WL12	WASHER, LOCK 1/2
43	2	WL14	WASHER, LOCK 1/4
44			
45	5	WL516	WASHER, LOCK 5/16
46	12	SB142038	SCREW, SOC BTTN 1/4-20 x 3/8
47	12	WS14	WASHER, SPRING 1/4
48	REF	44600-MTL2A	SWTICH, 22mm KEYED 3 POS ALL REMOVA
49	REF	66846	LEGEND PLATE, 22mm AUTO-STOP-RUN
50	4	WF516	WASHER, FLAT 5/16
51			
52	4	WS516SS	WASHER, SPRING 5/16 SS
53	1	18062	KEY, 1/4 SQ x 2" LONG
54	1	66292	WASHER, 11/32 ID x 1 1/2 OD x .06 THK
55	4	REF	WASHER, SPRING - SEALING
56	REF	67789	GEARMOTOR, 3/4HP 230/380/460V LENZE



93



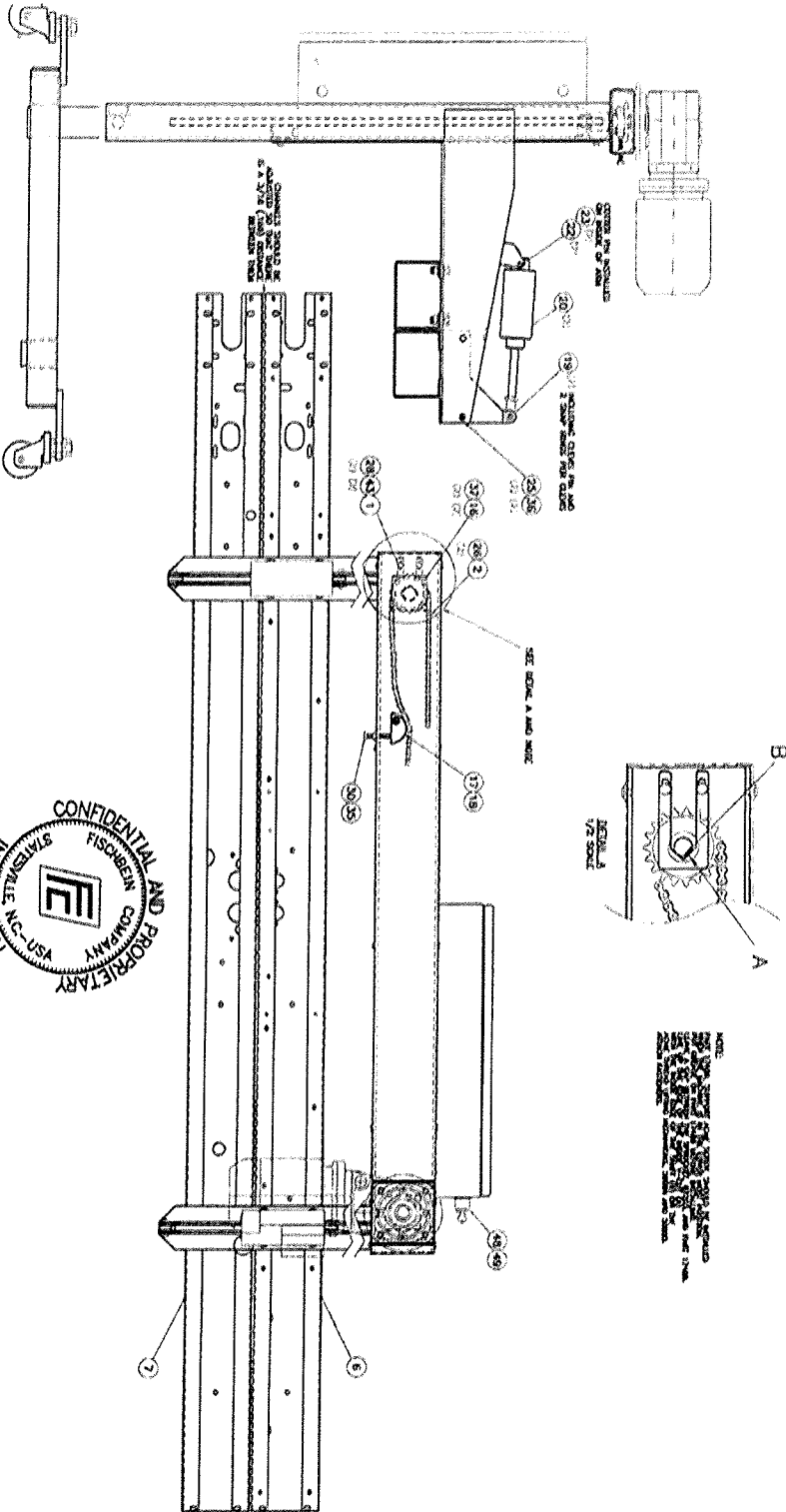
ISSY, FRAME PILS 300

SHEET:	DATE:	REV:	REV DATE:	DRAWN:
1 OF 2	3/02	A	4/03	S



REV. INT.

SSY, FRAME PILS 300



REV. DATE

SHEET	DATE	REV	REV DATE	ISSUE NUMBER	PAGE
2 OF 2	3/02	A	4/03	50000	84

**FISCHBEIN® CO. MODEL PILS 300
OPERATOR'S MANUAL**

Parts List for Drawing 50002- Rev. D

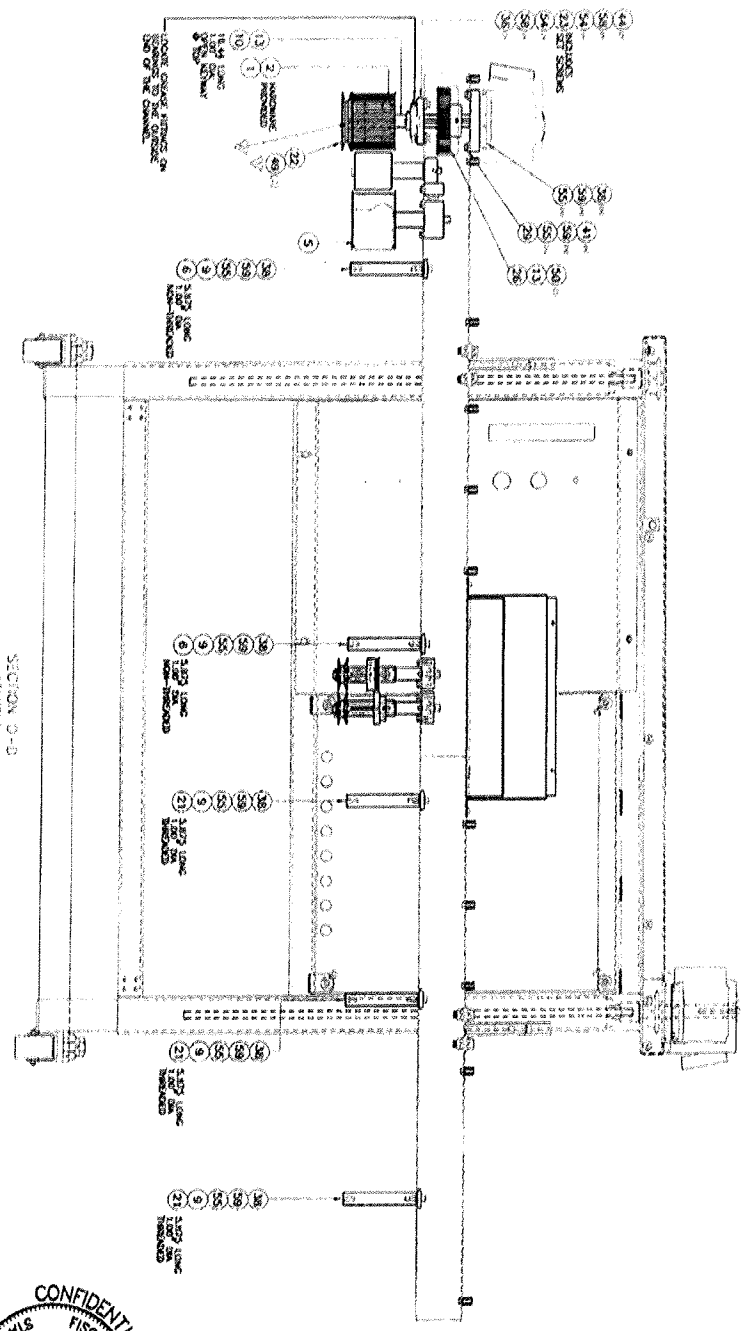
Item	Quantity	Part No.	Description
1	1	17410	SPROCKET, DRIVE COMPRESSION 3"
2	1	17411	BUSHING, TAPERLOCK (#SD X 1" ID)
3	1	17414	ASSY, ROLLER TAKEUP COMPRESS 3"
4	1	17415	ASSY, ROLLER-COMPRESSION BELT
5	1	17758	BELT, TIMING W/COATING (300H300)
6	2	17429	SHAFT, CARRY THRU MOUNTING PBC
7	1	17433	BRACKET, CONTROL MOUNTING REAR PBC
8			
9	5	17495	PLATE, CARRY-THRU STIFFNER, PBC
10	1	17820	SHAFT, DRIVE PBC PILS
11	1	17921	BUSHING, COMP ROLLER 1 3/4" FOLD
12	1	17922	BUSHING, COMP IDLER ROLLER 1 3/4" FOLD
13	3	18062	KEY, 1/4 SQ X 2" LONG
14	2	18116	KEY, 1/4 SQ X 1" LONG
15	1	50017	ROLLER, POLY SEAL COMPRESSION
16	1	50021	WHEEL, CREASER ROLLER
17	4	50022	BEARING, IGLIDE HI-TEMP .75 ID, FLANGED
18	2	50026	WASHER, 1 1/8 OD, .41 ID SPECIAL
19	2	50027	BUSHING, COMPRESSING (DRIVE)
20	2	50028	BLOCK, BUSHING MTG (STATIONARY)
21	3	50029	SHAFT, CARRY-THRU MOUNTING PTP PILS
22	1	50041	PULLEY, DRIVE 4.55 PD NARROW
23	1	50052	BEARING, FLANGE UNIT 1" DIA
24	2	50095	ASSY, COMPRESSION/CREASER DRIVE
25	1	52048	BLOCK, COMPRESSION SHAFT SUPPORT
26	1	52076	GEAR, SPUR (PILS)
27	1	52085	BLOCK, COMPRESSION ADJUSTMENT
28	1	55342	BRACKET, CONTROL MOUNTING FRONT
29	1	55377	PLATE, GEARMOTOR MOUNTING
30	1	66292	WASHER, 11/32 ID X 1-1/2OD X .06 TK
31	16	67274	STANDOFF, 1/2" HEX 1/4-20 X 3/4
32	1	A5076	BLOCK, ROLLER - COMPRESSION
33	1	H121334	BOLT, HEX HD 1/2-13 X 3/4
34			
35	24	H142012	BOLT, HEX HD 1/4-20 X 1/2
36	4	H3816114	BOLT, HEX HD 3/8-16 X 1 1/4
37	2	H381678	BOLT, HEX HD 3/8-16 X 7/8
38	9	H516181	BOLT, HEX 5/16-18 X 1

FISCHBEIN® CO. MODEL PILS 300
OPERATOR'S MANUAL

Parts List for Drawing 50002- Rev. D (cont.)

Item	Quantity	Part No.	Description
39	2	H5161812	BOLT, HEX HD 5/16-18 X 1/2
40	1	H516182FT	BOLT, HEX HD 5/16-18 X 2 FT
41	8	H5161834	BOLT, HEX HD 5/16-18 X 3/4
42	1	NH51618	NUT, HEX 5/16-18
43			
44	4	NJ3816	NUT, HEX JAM 3/8-16
45	2	SB142038	SCREW, SOC BTTN 1/4-20 X 3/8
46	2	SB381658	SCREW, SOC BTTN 3/8-16 X 5/8
47	1	SB5161812	SCREW, SOC BTTN 5/16-18 X 1/2
48	2	SC1213612	SCREW, SOC CAP 1/2-13 X 6 1/2
49	3	SF51618234	SCREW, SOC FLAT 5/16-18 X 2 3/4
50	2	SS103212	SCREW, SOC SET #10-32 X 1/2
51	4	SS103238	SCREW, SOC SET #10-32 X 3/8
52	2	WF12	WASHER, FLAT 1/2
53	6	WF14	WASHER, FLAT 1/4
54	10	WF38	WASHER, FLAT 3/8
55	19	WF516	WASHER, FLAT 5/16
56	2	WL12	WASHER, LOCK 1/2
57	22	WL14	WASHER, LOCK 1/4
58	12	WL38	WASHER, LOCK 3/8
59	20	WL516	WASHER, LOCK 5/16
60	4	WS14	WASHER, SPRING 1/4
61	REF	67789	GEARMOTOR, 3/4HP, 230/380/460V LENZE

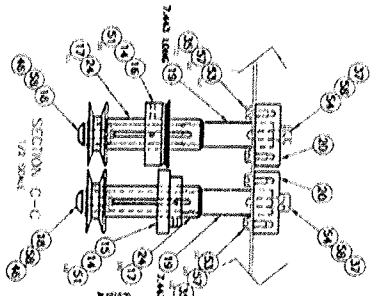
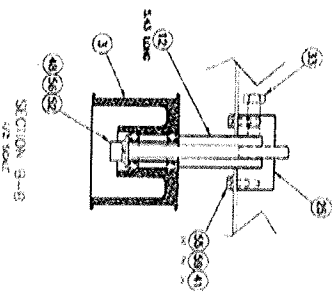
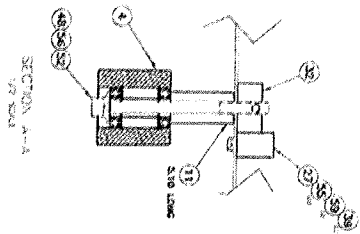
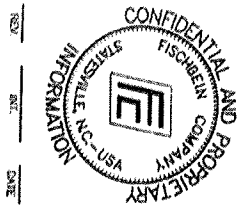
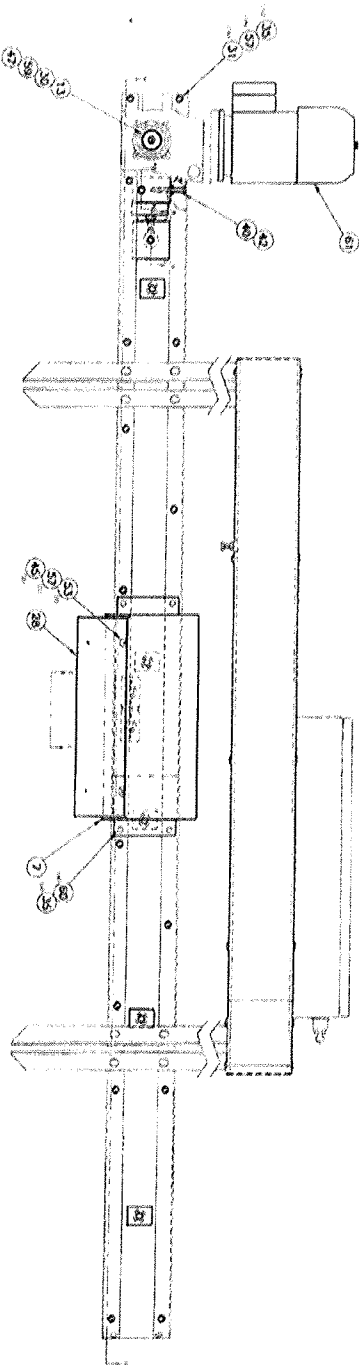
SSY, FIXED CHANNEL REAR PILLS 300



NOTES:
 △ FOR LOCKER TO PROVIDE
 DIMENSIONS TO CENTER OF
 CHANNEL AND CENTER OF
 CHANNEL TO CENTER OF
 CHANNEL TO CENTER OF CHANNEL
 CHANNEL TO CENTER OF CHANNEL



REV	DATE	BY	CHK DATE	ISSUING OFFICE	DATE
SHEET 1 OF 2	DWG DATE 5/02	REV D	REV DATE 7/04	DRAWING NUMBER S0002	DWG 87



DO NOT OIL, BENTHIN EXPANSION, USE
STANDARD AND TYPICAL CONNECTIONS
FOR THE MOTOR AND CHANNEL TO THE
MOUNT OF THE CHANNEL.

FIXTURES, BRACKETS, IN OTHER LITERATURE, MUST
BE USED TO MOUNT THE CHANNEL TO THE
MOUNT OF THE CHANNEL.

SY, FIXED CHANNEL REAR PILS 300

SHEET	DATE	REV	REV DATE	ISSUING NUMBER	PAGE
2 OF 2	5/02	D	7/04	S0002	88

FISCHBEIN® CO. MODEL PILS 300
OPERATOR'S MANUAL

Parts List for Drawing 50003- Rev. D

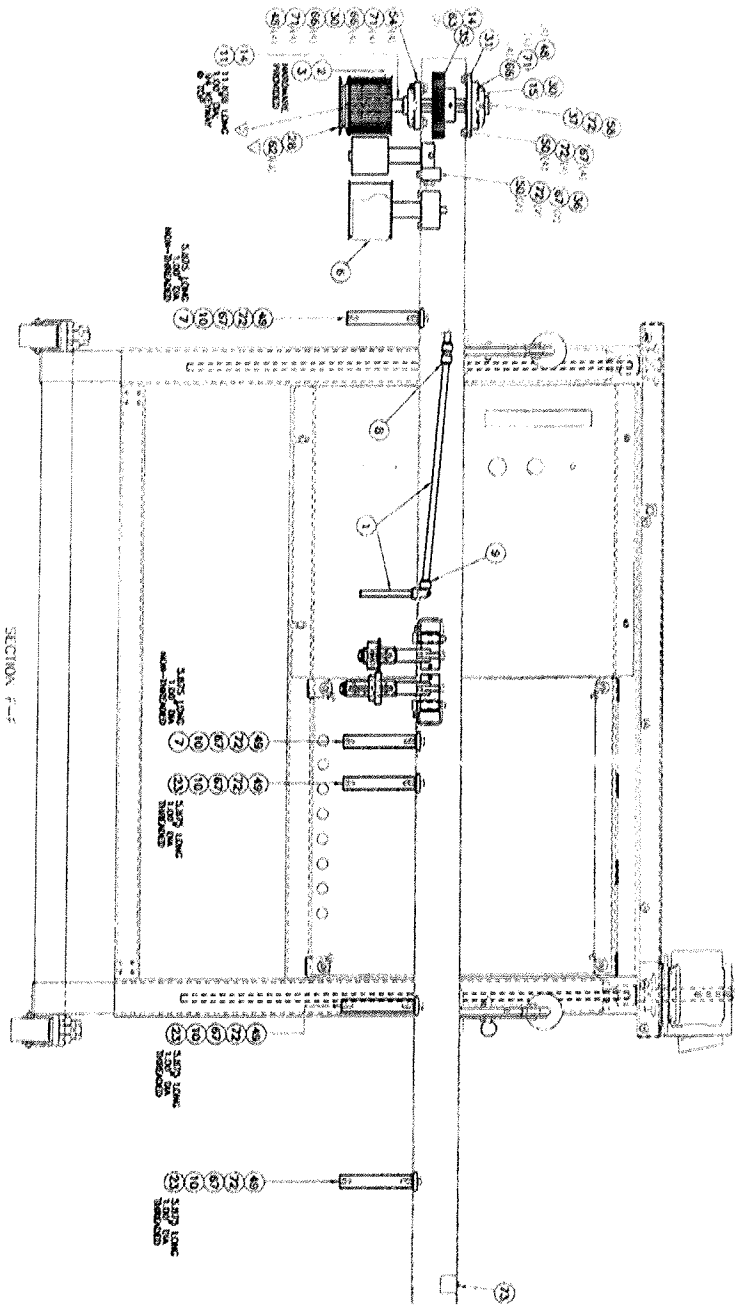
Item	Quantity	Part No.	Description
1	2-ft	17288	TUBING, PFA TEFLON 1/2 OD
2	1	17410	SPROCKET, DRIVE COMPRESSION 3"
3	1	17411	BUSHING, TAPERLOCK (#SD X 1" ID)
4	1	17414	ASSY, ROLLER TAKEUP COMPRESS 3"
5	1	17415	ASSY, ROLLER-COMPRESSION BELT
6	1	17758	BELT, TIMING W/COATING (300H300)
7	2	17429	SHAFT, CARRY THRU MOUNTING PBC
8	1	17467	FITTING, STRAIGHT UNION 1/2T X 1/2T
9	1	17484	FITTING, UNION ELBOW 1/2 T X 1/2 T
10	5	17495	PLATE, CARRY-THRU STIFFNER, PBC
11	1	17824	SHAFT, DRIVEN PBC PILS
12	1	17921	BUSHING, COMP ROLLER 1 3/4" FOLD
13	1	17922	BUSHING, COMP IDLER ROLLER 1 3/4" FOLD
14	3	18062	KEY, 1/4 SQ X 2" LONG
15	2	18116	KEY, 1/4 SQ X 1" LONG
16	1	50016	TUBE, CREASER WHEEL FRONT
17	1	50017	ROLLER, POLY SEAL COMPRESSION
18	1	50018	BLADE, CREASER PILS 300
19	1	50019	WHEEL, CREASER PILS 300
20	1	50020	TUBE, POLY SEAL COMPRESSION
21	4	50022	BEARING, IGLIDE HI-TEMP .75 ID, FLANGED
22	2	50026	WASHER, 1 1/8 OD, .41 ID SPECIAL
23	3	50029	SHAFT, CARRY-THRU MOUNTING PTP PILS
24	1	50030	BUSHING, CREASER FRONT
25	1	50032	BUSHING, POLY SEAL COMPRESSION
26	1	50033	BLOCK, PIVOT, LEFT
27	2	50034	BRACKET, PIVOT MOUNTING PILS 300
28	1	50041	PULLEY, DRIVE 4.55 PD NARROW
29	1	50043	BLOCK, PIVOT, RIGHT PILS 300
30	2	50052	BEARING, FLANGE UNIT 1" DIA
31	1	50093	PLATE, MOUNT FLANGE FEARING (PILS)
32	1	52013	BLOCK, COMPRESSION ADJUSTING
33	2	52043	BUSHING, COMPRESSION PIVOT
34	1	52048	BLOCK, COMPRESSION SHAFT SUPPORT
35	1	52076	GEAR, SPUR (PILS)
36	1	52085	BLOCK, COMPRESSION ADJUSTMENT
37	1	66292	WASHER, 11/32 ID X 1-1/2OD X .06 TK
38	2	67204	SPRING, COMPRESSION 5/8 OD X 3 LG

FISCHBEIN® CO. MODEL PILS 300
OPERATOR'S MANUAL

Parts List for Drawing 50003- Rev. D (cont.)

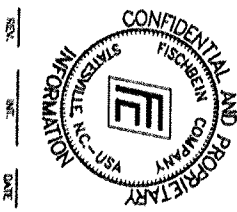
Item	Quantity	Part No.	Description
39	2	67209	BOLT, SHOLDER 1/2 DIA X 1 3/4 LG
40	2	A5069	BLOCK, TENSION - CREASER
41	2	A5070	SCREW, CREASER TENSIONER
42	1	A5076	BLOCK, ROLLER - COMPRESSION
43	3	H103212	SCREW, HEX HD #10-32 X 1/2
44	1	H121334	BOLT, HEX HD 1/2-13 X 3/4
45	2	H14202	BOLT, HEX HD 1/4-20 X 2
46	4	H142038	BOLT, HEX HD 1/4-20 x 3/8
47	2	H3816112	BOLT, HEX HD 3/8-16 X 1 1/2
48	8	H38161	BOLT, HEX HD 3/8-16 X 1
49	5	H516181	BOLT, HEX 5/16-18 X 1
50	6	H5161812	BOLT, HEX HD 5/16-18 X 1/2
51	4	H5161834	BOLT, HEX HD 5/16-18 X 3/4
52	2	NJ1420	NUT, HEX JAM 1/4-20
53	2	NJ1213	NUT, HEX JAM 1/2-13
54	4	NJ3816	NUT, HEX JAM 3/8-16
55	2	NJ51618	NUT, HEX JAM 5/16-18
56	2	SB14201	SCREW, SOC BTTN 1/4-20 X 1
57	2	SB381658	SCREW, SOC BTTN 3/8-16 X 5/8
58	1	SB5161812	SCREW, SOC BTTN 5/16-18 X 1/2
59	2	SC1213612	SCREW, SOC CAP 1/2-13 X 6 1/2
60	4	SC142058	SCREW, SOC CAP 1/4-20 X 5/8
61	1	SC51618212	SCREW, SOC CAP 5/16-18 X 2 1/2
62	3	SF51618234	SCREW, SOC FLAT 5/16-18 X 2 3/4
63	2	SS103212	SCREW, SOC SET #10-32 X 1/2
64	4	SS103238	SCREW, SOC SET #10-32 X 3/8
65	2	WF12	WASHER, FLAT 1/2
66	14	WF38	WASHER, FLAT 3/8
67	15	WF516	WASHER, FLAT 5/16
68	3	WIT10	WASHER, INTERNAL TOOTH #10
69	2	WL12	WASHER, LOCK 1/2
70	6	WL14	WASHER, LOCK 1/4
71	16	WL38	WASHER, LOCK 3/8
72	16	WL516	WASHER, LOCK 5/16
73	REF	67839	SWITCH, LIMIT, PANEL MOUNT NC/NO

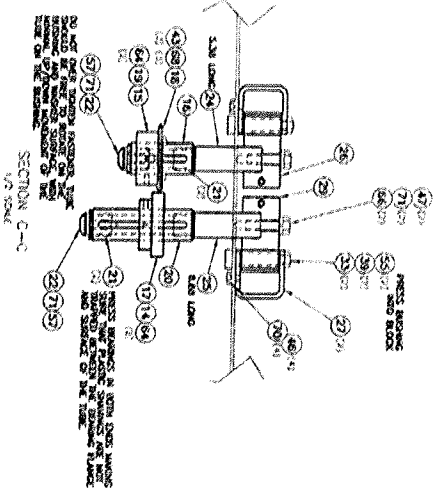
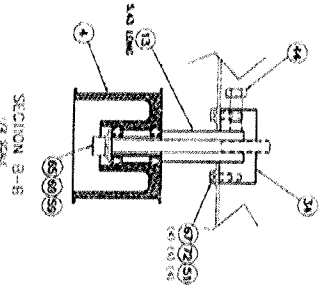
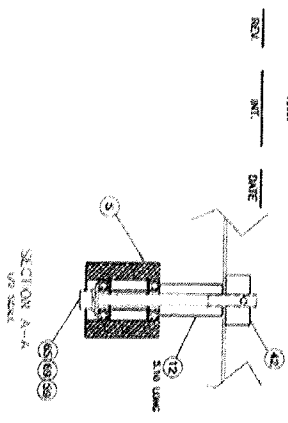
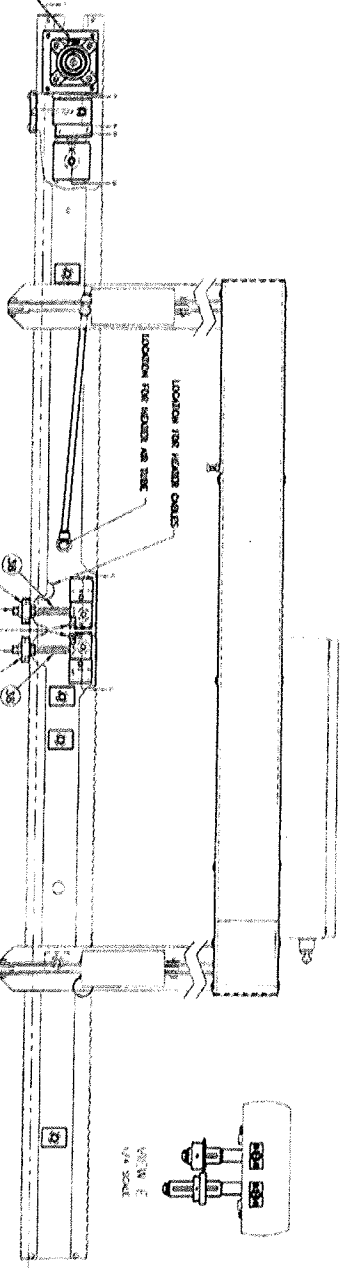
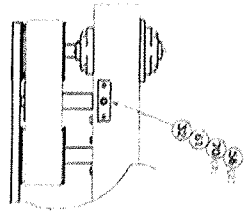
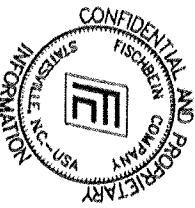
SSY, SWING CHANNEL PILLS 300



NOTES
 ✓ ADD NOTE TO DRAWING
 ✓ CHANGE NOTE TO REF. A
 ✓ INCLUDE THE SHEET NUMBER

SHEET	DWG. DATE	REV	REV. DATE	ISSUING NUMBER	DATE
1 OF 2	4/02	0	7/04	50003	91





SSY, SWING CHANNEL PLUS 300

SHEET	DATE	REV	REV DATE	ISSUED BY	SCALE
2 OF 2	4/02	0	7/04	SK003	92

**FISCHBEIN® CO. MODEL PILS 300
OPERATOR'S MANUAL**

Parts List for Drawing 50004- Rev. D

Item	Quantity	Part No.	Description
1	1	50024	PLATE, CARRY-THRU FRONT PINCH
2.1	REF	17378	ASSY, PBC HEATER, 460V, 3000W, R/L
2.2	REF	17952	ASSY, PBC HEATER, 230V, 3000W, R/L
3	1	17947	GUIDE, HEAT MANIFOLD 1 3/4 FOLD
4	2	17455	INSULATION, MANIFOLD BASE PBC
5	4	NJ51618	NUT, HEX JAM 5/16-18 UNC
6	2	SC51618114	SCREW, SOC CAP 5/16-18 X 1 1/4
7	2	SC5161834	SCREW, SOC CAP 5/16-18 X 3/4
8	4	WF516	WASHER, FLAT 5/16
9	6	WL516	WASHER, LOCK 5/16
10	4	50096	WASHER, FLAT 5/16 SPECIAL .562 OD
11	2	SC142058	BOLT, SOC CAP 1/4-20 X 5/8
12	2	WF14	WASHER, FLAT 1/4
13	2	WL14	WASHER, LOCK 1/4
14	REF	17495	PLATE, CARRY-THRU STIFFNER PBC
15	REF	17429	SHAFT, CARRY THRU MOUNTING PBC
16	REF	50042	SPACER GUARD PBC
17	REF	SF142012	SCREW, SOC FLAT 1/4-20 X 1/2
18	REF	50054	CHANNEL, SWING, FRONT, PILS 300
19	REF	17288	TUBING, PFA TEFLON 1/2 OD

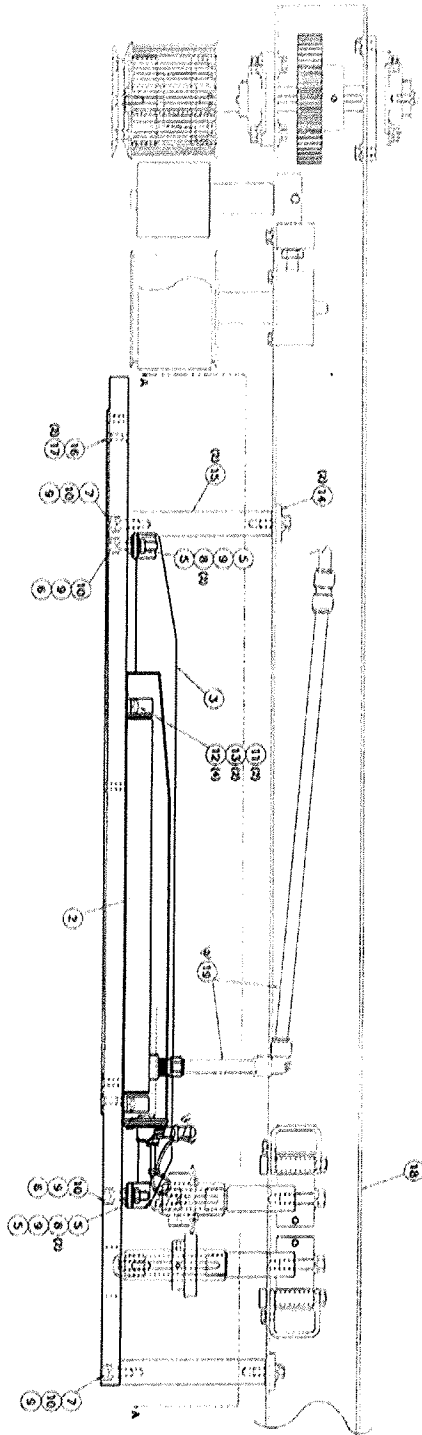
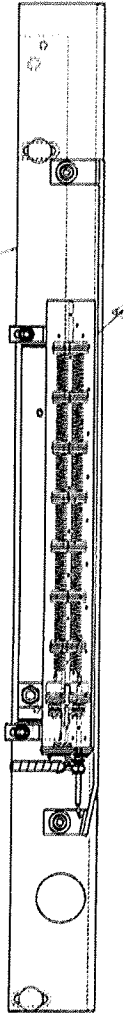
SSY, FRONT PINCH PILLS 300

REV. INT. DATE



- NOTE:
1. PULL CHAINS NEED THROUGH THE 1/2" DIAMETER HOLE IN CHANNEL.
 2. HOLE 1/2" TYPICAL TOLERANCE THROUGH THE 1/4" HOLE IN CHANNEL.
 3. HOLE 1/2" AS SHOWN THROUGH THE ROCKER ARM AND THE MAIN CASE.

VIEW A-A



SHEET	DATE	REV	REV DATE	ISSUING NUMBER	PAGE
1 OF 1	6/02	C	8/04	50004	95

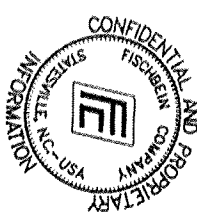
**FISCHBEIN® CO. MODEL PILS 300
OPERATOR'S MANUAL**

Parts List for Drawing 50005- Rev. B

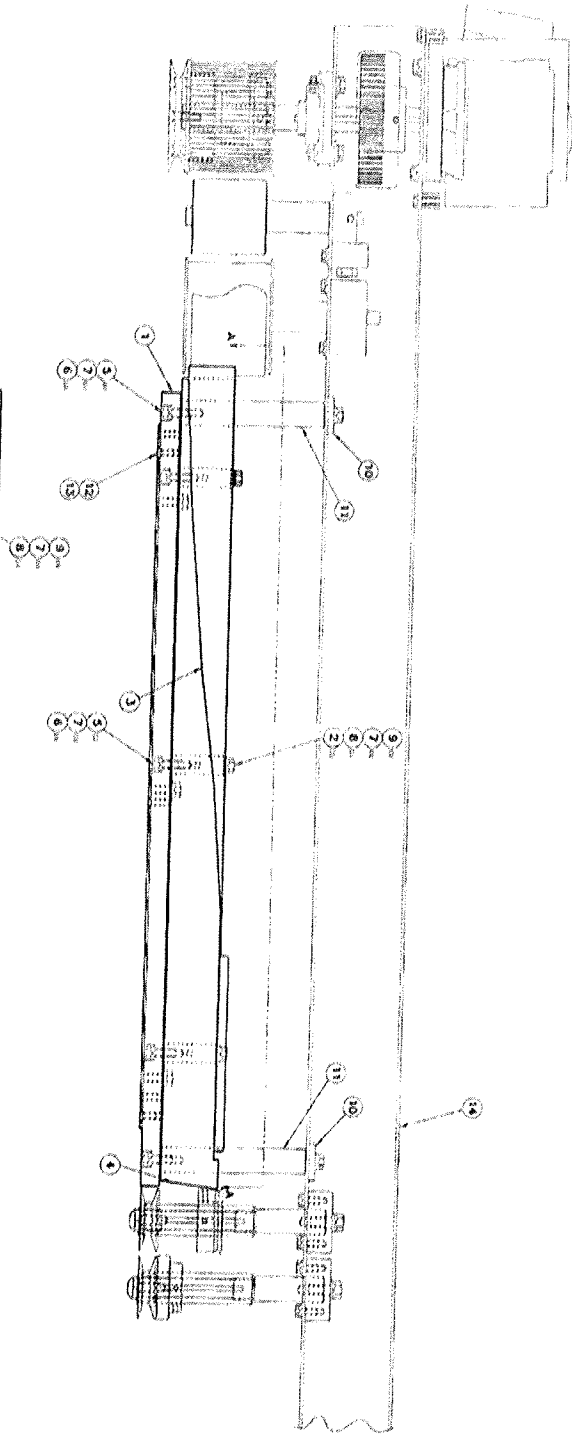
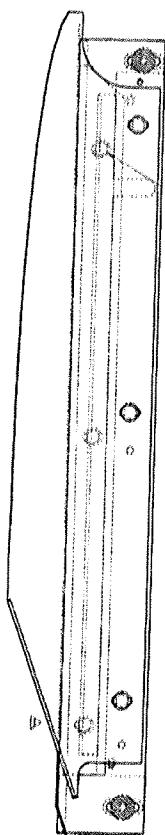
Item	Quantity	Part No.	Description
1	1	50023	PLATE, CARRY-THRU REAR PINCH
2	3	17926	STANDOFF, 2 1/8" TALL, 1 3/4" FOLD
3	1	50055	ASSY, UPPER FOLDER 1 3/4" PILS 300
4	1	50094	GUIDE, FOLDER
5	5	50096	WASHER, FLAT 5/16 SPECIAL .562 OD
6	5	SC5161834	SCREW, SOC CAP 5/16-18 X 3/4 BO G5
7	11	WL516	WASHER, LOCK 5/16
8	6	H5161812	BOLT, HEX HD 5/16-18 X 1/2 CZ G5
9	6	WF516	WASHER, FLAT 5/16
10	REF	17495	PLATE, CARRY-THRU STIFFNER PBC
11	REF	17429	SHAFT, CARRY THRU MOUNTING PBC
12	REF	50042	SPACER, GUARD PBC
13	REF	SF142012	SCREW, SOC FLAT 1/4-20 X 1/2
14	REF	50053	CHANNEL, FIXED REAR PILS 300

SY, REAR PINCH PILLS 300

REV. _____ DATE _____



SECTION A-A



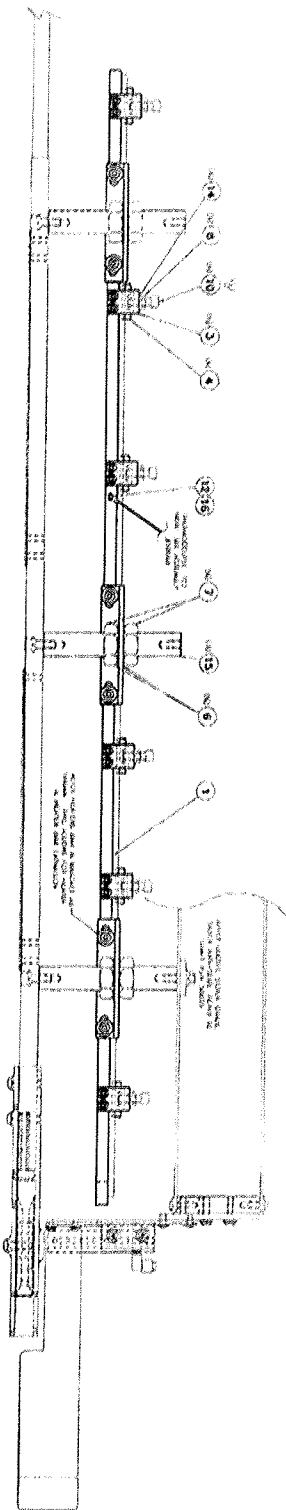
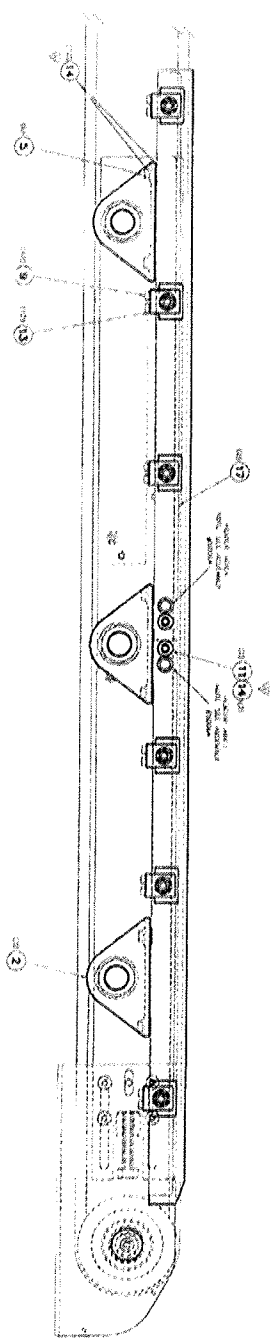
SHEET	DATE DATE	REV	REV DATE	DRAWING NUMBER	PAGE
1 OF 1	6/02	B	11/03	50005	98

**FISCHBEIN® CO. MODEL PILS 300
OPERATOR'S MANUAL**

Parts List for Drawing 50006- Rev. A

Item	Quantity	Part No.	Description
1	1	50035	PLATE, HEATER MOUNT PTP FRONT
2	3	50040	BRACKET, PTP FRONT HEATER
3	6	50075	CLAMP, HEATER FRONT PTP
4	6	50076	BRACKET, HOLD DOWN PTP
5	6	50081	BOLT, SHOULDER 5/16 DIA, 31/32 LG
6	6	50083	WASHER, FLAT 1", 1.75 OD DELRIN
7	6	NJ114	NUT, HEX JAM 1/14 UNF-2B
8	6	NJ51618SS	NUT, HEX JAM 5/16-18 UNC SS
9	12	SC103258SS	SCREW, SOC CAP #10-32 X 5/8 BO
10	6	SC516181SS	SCREW, SOC CAP 5/16-18 X 1 SS
11	2	SC5161834SS	SCREW, SOC CAP 5/16-18 X 3/4 SS
12	1	SC63214	SCREW, SOC CAP #6-32 X 1/4 G8
13	12	WS10	WASHER SPRING #10
14	20	WS516	WASHER SPRING 5/16
15	REF	50029	SHAFT, CARRY THRU MOUNTING, PTP PILS
16	REF	67802	THERMOCOUPLE, J TYPE, RING, #6
17	REF	67829	HEATER, 1125W 230V STRIP 1"X 23.5"

ASSY, FRONT PTP PILLS 300



DO NOT COPY OR REPRODUCE WITHOUT PERMISSION OF THE PATENT OFFICE. ALL RIGHTS RESERVED.



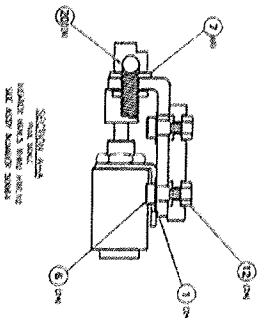
REV	INT	DATE	SHEET	DWG DATE	REV	REV DATE	ISSUING NUMBER	PAGE
			1 OF 1	9/02	A	9/02	50006	101

**FISCHBEIN® CO. MODEL PILS 300
OPERATOR'S MANUAL**

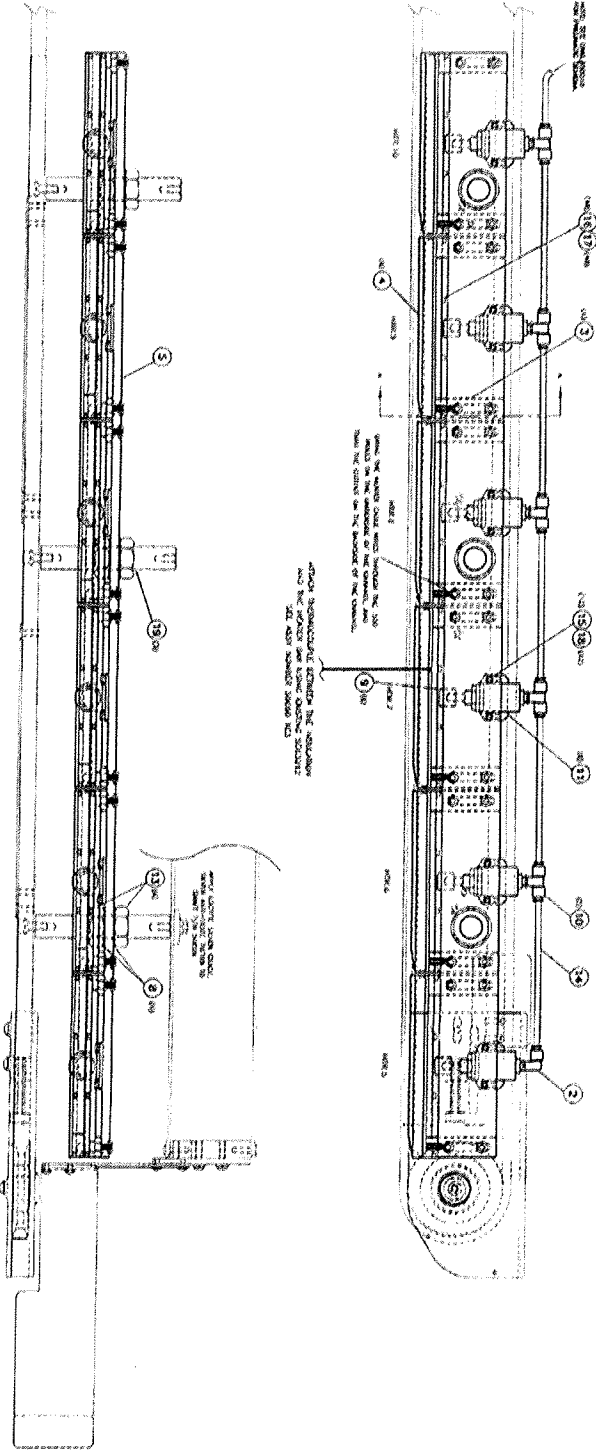
Parts List for Drawing 50007- Rev. B

Item	Quantity	Part No.	Description
1	24	15066	WASHER, THRUST (.312 I.D.)
2	REF	17027	FITTING, ELBOW 1/8 NPT X 1/4T
3	6	50036	BRACKET, PTP BACK HEATER
4	6	50037	BAR, HEATER CARTRIDGE PTP
5	1	50039	PLATE, HEATER-CYLINDER MOUNT
6	24	50081	BOLT, SHOULDER 5/16 DIA, 31/32 LG
7	6	50082	INSULATION, BAR HEATER CARTRIDGE
8	6	50083	WASHER, FLAT 1", 1.75 OD DELRIN
9	6	65012	PUSHER, PTP CYLINDER
10	REF	66055	FITTING, T-BRANCH 1/8M X 1/4T-BRASS
11	REF	66241	CYLINDER, AIR-MITE #P100-1V
12	24	NH1420	NUT, HEX 1/4-20 UNC-2B
13	6	NJ114	NUT, HEX JAM 1/14 UNF-2B
14	REF	P4968	TUBING, POLY 1/4 OD (RED)
15	12	SC103212	SCREW, SOC CAP #10-32 X 1/2 BO
16	48	SC63212	SCREW, SOC CAP #6-32 X 1/2 BO
17	48	WL6	WASHER, LOCK #6
18	12	WS10	WASHER SPRING #10
19	REF	50029	SHAFT, CARRY THRU MOUNTING, PTP PILS
20	REF	67824	HEATER, 300W 230V CARTRIDGE
21	REF	67802	THERMOCOUPLE, J TYPE, RING, #6

SY, REAR PTP PILS 300



NOTE: SECTION
INDICATE WHICH VIEW PARTS
SEE DRAW NUMBER 3000A



SHEET:	DATE:	REV:	REV DATE:	DESIGNED BY:	DATE:
1 OF 1	5/7/50	2	10/1/50	CHERRY	5/4



**FISCHBEIN® CO. MODEL PILS 300
OPERATOR'S MANUAL**

Parts List for Drawing 50008- Rev. B

Item	Quantity	Part No.	Description
1	1	50031	PLATE, CARRY-THRU PTP FRONT
2	1	50077	PLATE, BOTTOM ENTRANCE SUPPORT
3	1	50080	PLATE, TOP FRONT INFEED
4	3	50096	WASHER, FLAT 5/16 SPECIAL .562 OD
5	1	52023	PULLEY, ENTRANCE IDLER
6	1	66028	BEARING, 1.00 ID X 2.00 OD X .75 TK
7	1	67202	WASHER, THRUST 1.002 ID X 1.562 OD
8	1	67213	BELT, "V" W/COATING (B210)
9	1	H12133FT	BOLT, HEX HD 1/2-13 X 3 FT CZ
10	4	SB51618114	SCREW, SOC BTTN 5/16-18 X 1 1/4 BO
11	1	SB5161812	SCREW, SOC BTTN 5/16-18 X 1/2 BO
12	3	SC516181SS	SCREW, SOC CAP 5/16-18 X 1 SS
13	1	WF516	WASHER, FLAT 5/16
14	8	WL516	WASHER, LOCK 5/16
15	6	WS10	WASHER SPRING #10
16	REF	50044	SPACER, GUARD PTP EXIT
17	REF	50045	SPACER, GUARD PTP ENTR
18	1	17425	BRACKET, BLOWER-AIR SCURBBER
19	1	A5672	MANIFOLD, BLOWER-AIR SCURBBER
20	1	50121	GUARD, INFEED, PILS
21	1	50120	SPACER, INFEED, PILS
22	1	50119	GUIDE, INFEED, FRONT PILS
23	1	52165	BLOCK, FIXED CHANNEL END
24	2	WL10	WASHER, LOCK #10
25	2	WF10	WASHER, FLAT #10
26	2	NH1032	NUT, HEX HD #10-32 UNF-2B
27	6	SB103238	SCREW, SOC BTTN #10-32 UNF X 3/8
28	2	SB103234	SCREW, SOC BTTN #10-32 UNF X 3/4
29	3	SB142012	SCREW, SOC BTTN 1/4-20 UNC X 1/2
30	3	SB142034	SCREW, SOC BTTN 1/4-20 UNC X 3/4
31	3	WL14	WASHER, LOCK 1/4
32	3	WF14	WASHER, FLAT 1/4
33	3	WS14	WASHER SPRING 1/4
34	1	66058	FITTING, PLUG C'SK HEX 1/8 NPT
35	1	SS142038	SCREW, SOC SET 1/4-20 UNC X 3/8
36	1	17027	FITTING, ELBOW 1/8 M X 1/4 T SWIVEL
37	1	67274	STANDOFF, 1/2 HEX X 1/4-20 UNC X 3/4
38	1	SS142058	SCREW, SOC SET 1/4-20 UNC X 5/8

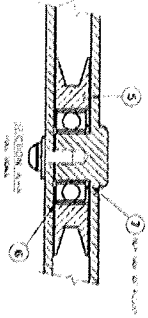
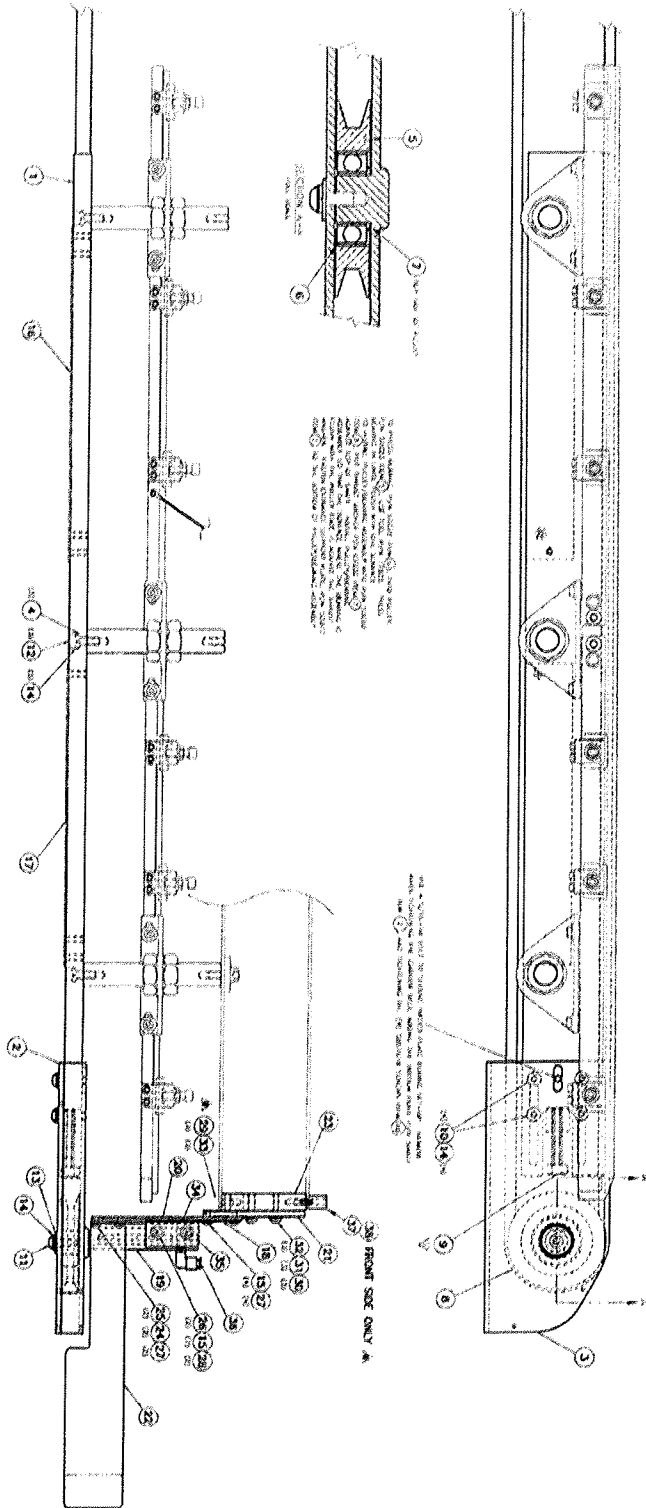
ASSY, INFEED, FRONT, PILS 300

REV. DATE

SHEET	DATE	REV	REV DATE	REVISIONS	PAGE
1 OF 1	4/72	8	11/02	50005	107



NOTES:
 1. ALL DIMENSIONS ARE IN INCHES UNLESS OTHERWISE SPECIFIED.
 2. DIMENSIONS TO CENTER UNLESS OTHERWISE SPECIFIED.



NOTE: THIS SECTION IS FOR INFORMATION ONLY. THE DIMENSIONS SHOWN ARE FOR REFERENCE ONLY. THE DIMENSIONS SHOWN ARE FOR REFERENCE ONLY. THE DIMENSIONS SHOWN ARE FOR REFERENCE ONLY.

SEE FRONT SIDE ONLY

**FISCHBEIN® CO. MODEL PILS 300
OPERATOR'S MANUAL**

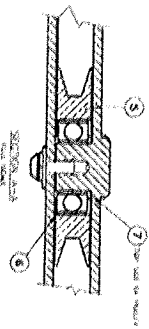
Parts List for Drawing 50011- Rev. A

Item	Quantity	Part No.	Description
1	1	50038	PLATE, CARRY-THRU PTP REAR
2	1	50077	PLATE, BOTTOM ENTRANCE SUPPORT
3	1	50079	PLATE, TOP REAR INFEED
4	3	50096	WASHER, FLAT 5/16 SPECIAL .562 OD
5	1	52023	PULLEY, ENTRANCE IDLER
6	1	66028	BEARING, 1.00 ID X 2.00 OD X .75 TK
7	1	67202	WASHER, THRUST 1.002 ID X 1.562 OD
8	1	67213	BELT, "V" W/COATING (B210)
9	1	H12133FT	BOLT, HEX HD 1/2-13 X 3 FT CZ
10	4	SB51618114	SCREW, SOC BTTN 5/16-18 X 1 1/4 BO
11	1	SB5161812	SCREW, SOC BTTN 5/16-18 X 1/2 BO
12	3	SC516181	SCREW, SOC CAP 5/16-18 X 1
13	1	WF516	WASHER, FLAT 5/16
14	8	WL516	WASHER, LOCK 5/16
15	REF	50044	SPACER, GUARD PTP EXIT
16	REF	50045	SPACER, GUARD PTP ENTR
17	REF	50114	GUARD, BELT, INTERNAL
18	REF	SB83238	SCREW, SOC BTTN #8-32 UNC X 3/8
19	REF	WS8	WASHER SPRING #8
20	1	50121	GUARD, INFEED, PILS
21	1	50120	SPACER, INFEED, PILS
22	1	50118	GUIDE, INFEED, REAR PILS
23	1	52165	BLOCK, FIXED CHANNEL END
24	2	WL10	WASHER, LOCK #10
25	2	WF10	WASHER, FLAT #10
26	4	WS10	WASHER, SPRING #10
27	6	SB103238	SCREW, SOC BTTN #10-32 UNF X 3/8
28	4	SB142012	SCREW, SOC BTTN 1/4-20 UNC X 1/2
29	3	SB142034	SCREW, SOC BTTN 1/4-20 UNC X 3/4
30	3	WL14	WASHER, LOCK 1/4
31	3	WF14	WASHER, FLAT 1/4
32	4	WS14	WASHER SPRING 1/4

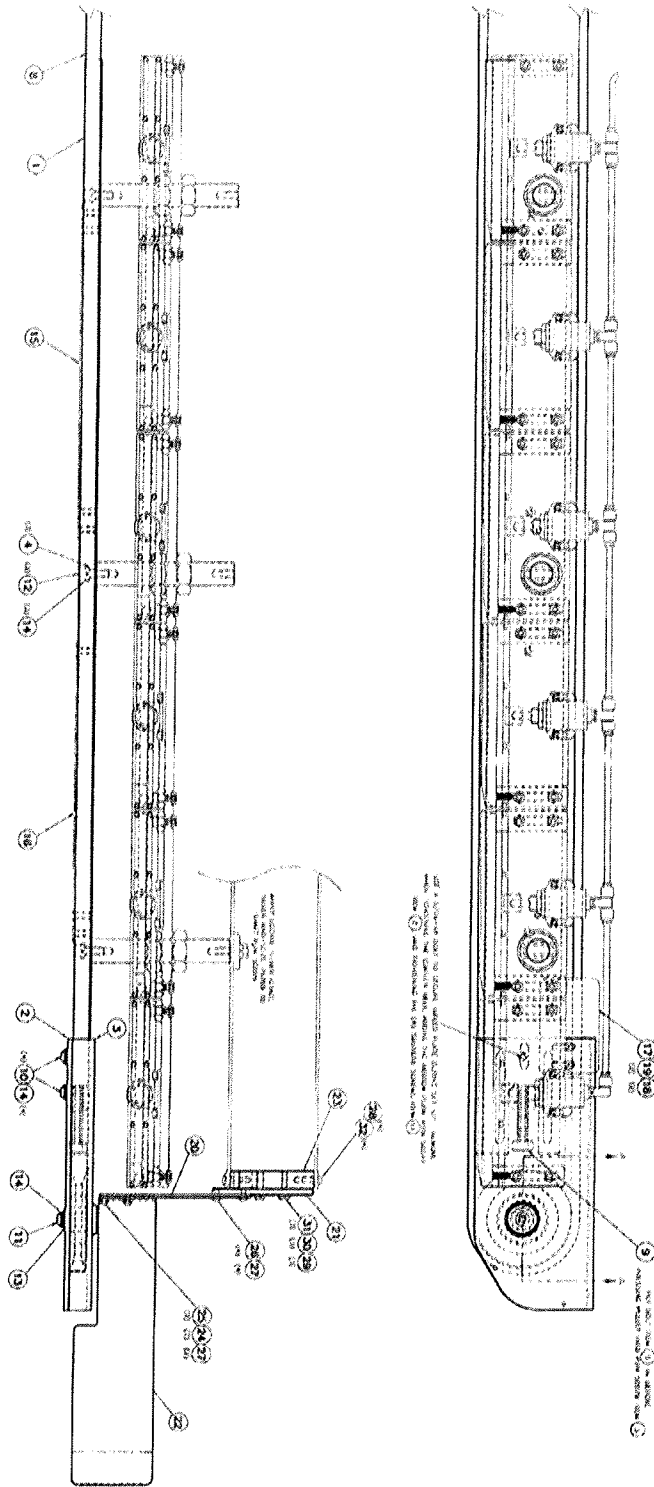
ISY, INFEED, REAR PILS 300

SHEET 1 OF 1	DATE 6/02	REV A	REV DATE 9/02	ISSUING NUMBER 50011	PAGE 110
-----------------	--------------	----------	------------------	-------------------------	-------------

REV _____ DATE _____



THIS DRAWING IS THE PROPERTY OF FISCHEIM COMPANY AND IS NOT TO BE REPRODUCED OR TRANSMITTED IN ANY FORM OR BY ANY MEANS, ELECTRONIC OR MECHANICAL, INCLUDING PHOTOCOPYING, RECORDING, OR BY ANY INFORMATION STORAGE AND RETRIEVAL SYSTEM, WITHOUT THE WRITTEN PERMISSION OF FISCHEIM COMPANY. THE INFORMATION CONTAINED HEREIN IS UNCLASSIFIED EXCEPT WHERE SHOWN OTHERWISE.

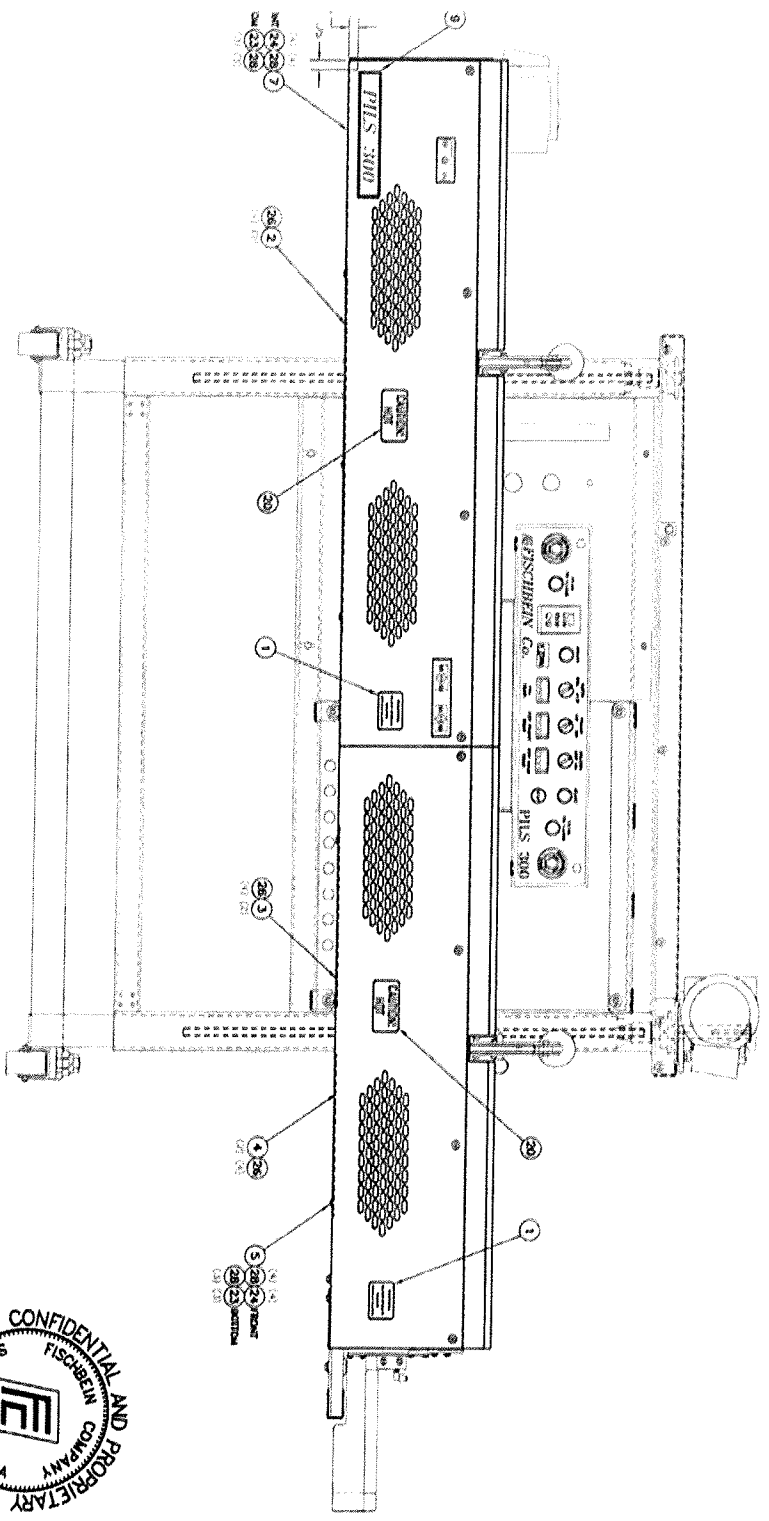


**FISCHBEIN® CO. MODEL PILS 300
OPERATOR'S MANUAL**

Parts List for Drawing 50009- Rev. D

Item	Quantity	Part No.	Description
1	8	10757	LABEL, WARNING-GUARDS
2	2	50042	SPACER, GUARD PBC
3	2	50044	SPACER, GUARD PTP EXIT
4	2	50045	SPACER, GUARD PTP ENTR
5	1	50046	GUARD, FRONT PTP
6	1	50047	GUARD, BACK PTP
7	1	50048	GUARD, FRONT PBC
8	1	50049	GUARD, BACK PBC
9	1	50068	LABEL, PILS 300
10	1	50071	GUARD, TOP CENTER
11	1	50072	GUARD, TOP ENTRANCE
12	1	50073	GUARD, TOP EXIT
13	1	50074	GUARD, FRONT DRIVE PLATE
14	2	50078	GUARD, ADJUSTMENT INFEED
15	1	50114	GUARD, BELT INTERFACE CE
16	2	50115	GUARD, OUTFEED CE PILS 300
17	2	52053	GUARD, ENTRANCE BELT
18	1	52059	GUARD, SWING CHANNEL END
19	1	NH832	NUT, HEX HD #8-32 UNC-2B
20	5	A5668	LABEL, WARNING (CAUTION HOT)
21	1	SC83212	SCREW, SCO CAP #8-32 UNC X 1/2
22	4	SB103238	SCREW, SOC BTTN #10-32 UNF X 3/8
23	12	SB142012	SCREW, SOC BTTN 1/4-20 UNC X 1/2
24	36	SB142038	SCREW, SOC BTTN 1/4-20 UNC X 3/8
25	20	SB83238	SCREW, SOC BTTN #8-32 UNC X 3/8
26	12	SF142012	SCREW, SOC FLAT 1/4-20 UNC X 1/2
27	4	WS10	WASHER, SPRING #10
28	48	WS14	WASHER, SPRING 1/4
29	20	WS8	WASHER, SPRING #8

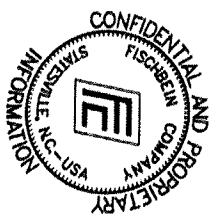
P113

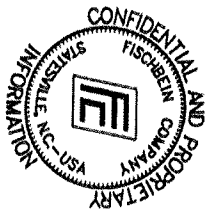
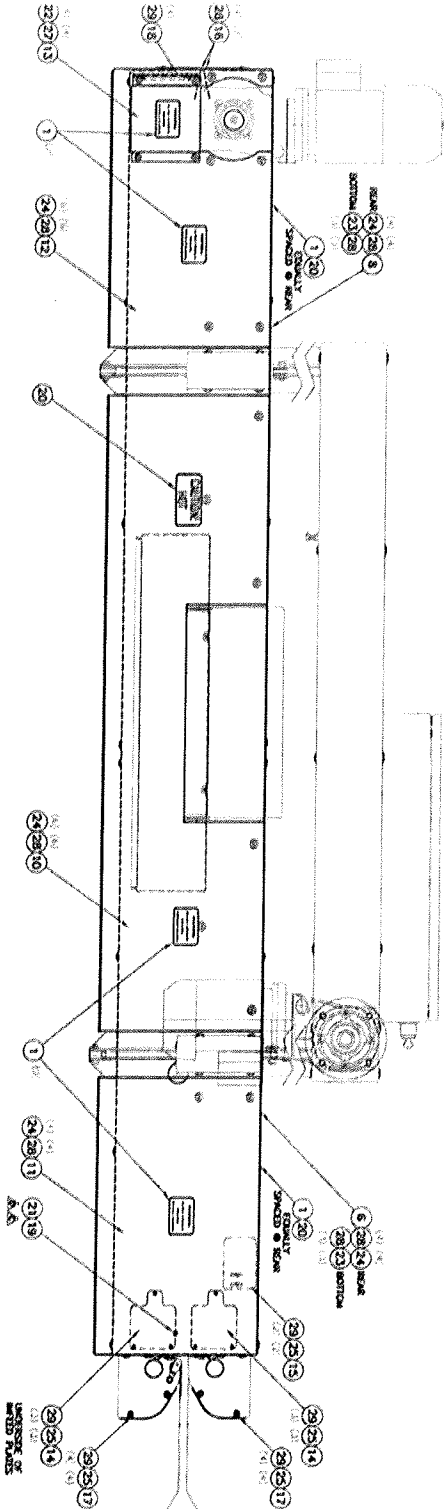


Y. SHROUDING PILS 3000

SHEET	DATE	REV	REV DATE	PROBING NUMBER	PAGE
1	5/10/73	1	5/10/73		1

REV _____ DATE _____
 INT _____ DATE _____





REV. SHEET. DATE

Y. SHROUDING PILS 300

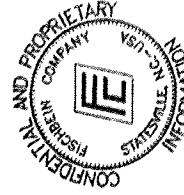
SHEET	DATE	REV	REV DATE	ISSUING NUMBERS	DATE
1					

P 114

**FISCHBEIN® CO. MODEL PILS 300
OPERATOR'S MANUAL**

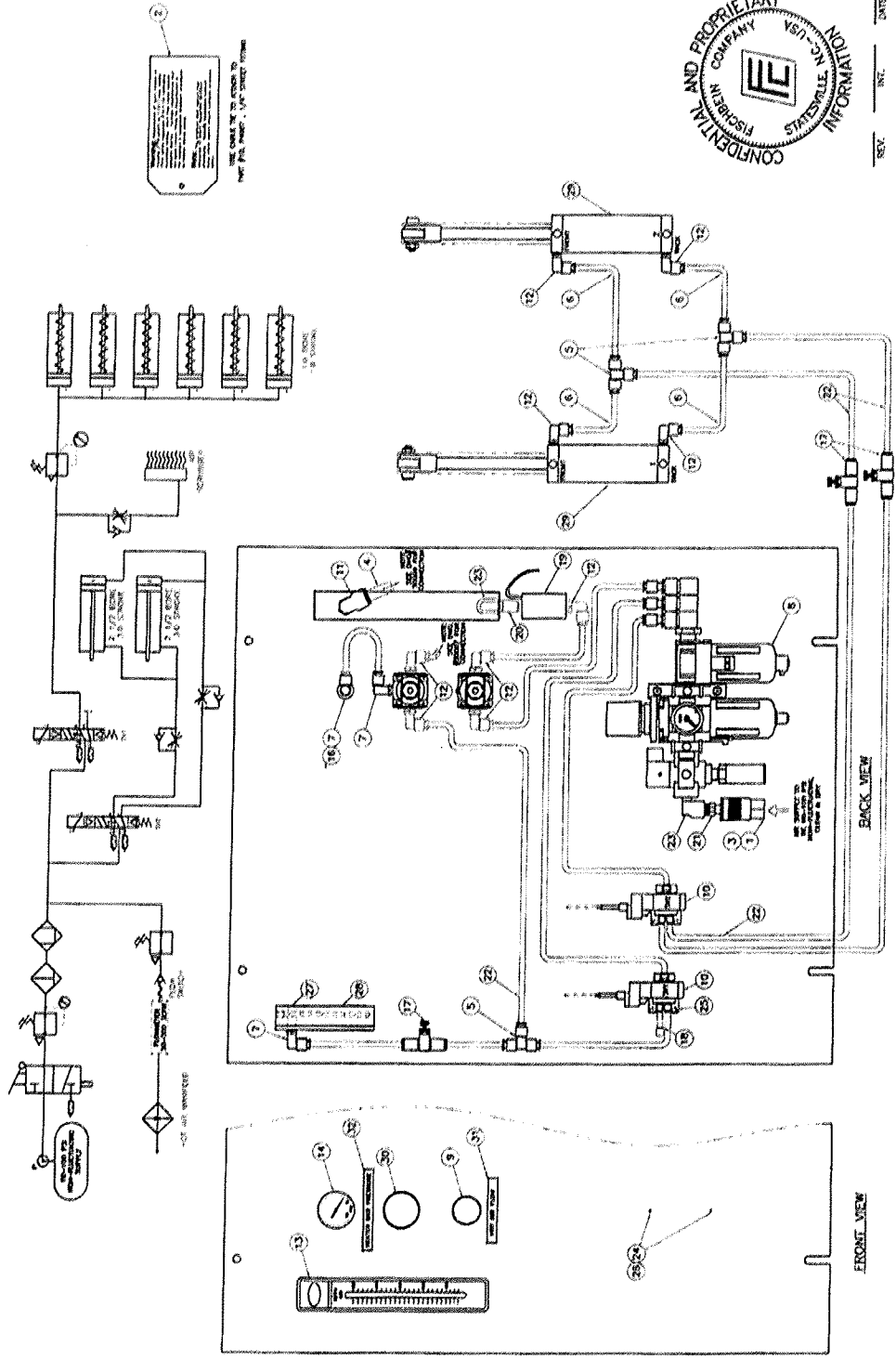
Parts List for Drawing 50010-Rev. B

Item	Quantity	Part No.	Description
1	1	10718	SOCKET, COUPLING (1970 CTL SYS REF)
2	1	10763	LABEL, WARNING-PNEUMATIC QUIK
3	1	16146	CAP, PROTECFION COUPLER (FEMALE)
4	3	17001	TUBING, POLY 1/2" OD (RED)
5	3	17002	FITTING, TEE 1/4" POLYFLO
6	18	17009	TUBING, PFA, TEFLON 1/4"
7	3	17027	FITTING, ELBOW 1/8 NPT X 1/4T
8	1	17464	KIT, FILTER/REG/MIST SEP 1/4" NPT
9	1	17465	REGULATOR, 1/4" NPT SMC
10	2	17468	KIT, SOLENOID VALVE 24VAC
11	1	17483	FITTING, ELBOW 1/4 NPT X 1/2 T
12	9	18108	ELBOW, SWIVEL (1/4 MALE X 1/4 TUBE)
13	1	43M14-HD500	FLOWMETER, DYER 50-500 SCFH
14	1	52187	GAUGE, PRESSURE 0-15 PSI, 1/8"
15	REF	66055	FITTING, T-BRANCH 1/8 NPT X 1/4 T
16	1	66056	FITTING, COUPLING 1/8 NPT
17	3	67480	FLOW CONTROL, IN-LINE
18	1	67556	PLUG, 1/4" SMC
19	1	67706	SENSOR, AIR FLOW, CHEM-TEC 375
20	1	P1911	FITTING, HEX NIPPLE 1/4 NPT
21	1	P4945	FITTING, MALE COUPLING 1/4 NPT
22	13	P4968	TUBING, POLYFLO 1/4 OD
23	2	P4987	FITTING, STREET 1/4 FNPT
24	2	SB103238	SCREW, SOC BUTT #10-32 UNF X 3/8
25	4	SC440316	SCREW, SOC #4-40 UNC X 3/16
26	2	WS10	WASHER, SPRING #10
27	REF	66058	FITTING, PLUG 1/8 NPT
28	REF	A5672	MANIFOLD, BLOWER-AIR SCURBBER
29	REF	A5615	CYLINDER, AIR
30	1	A5159	REGULATOR, PRECISION, 0-15 PSI
31	1	67833	LABEL, HOT AIR FLOW
32	1	67834	LABEL, HEATER BAR PRESSURE



REV. INT. DATE

SHEET	DATE	REV.	REV. DATE	REV.	DATE	DWG. NUMBER	DWG. NO.
1 OF 1	10/04	B	9/04			50010	117



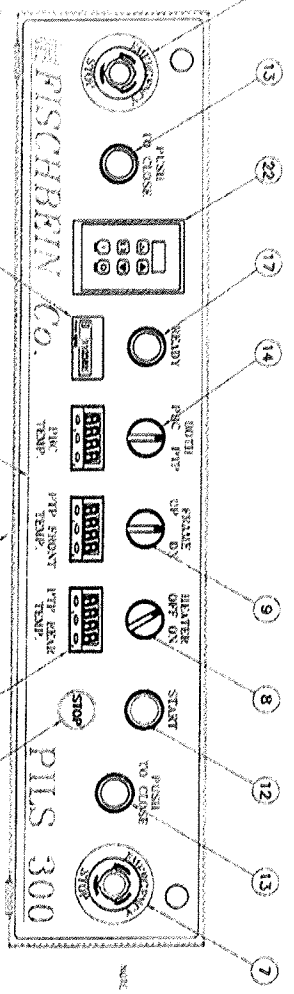
SEE DRAWING FOR DETAILS OF
PARTS LIST, MATERIALS, AND DIMENSIONS

SSY, PNEU, PLS 300

FISCHBEIN® CO. MODEL PILS 300
OPERATOR'S MANUAL

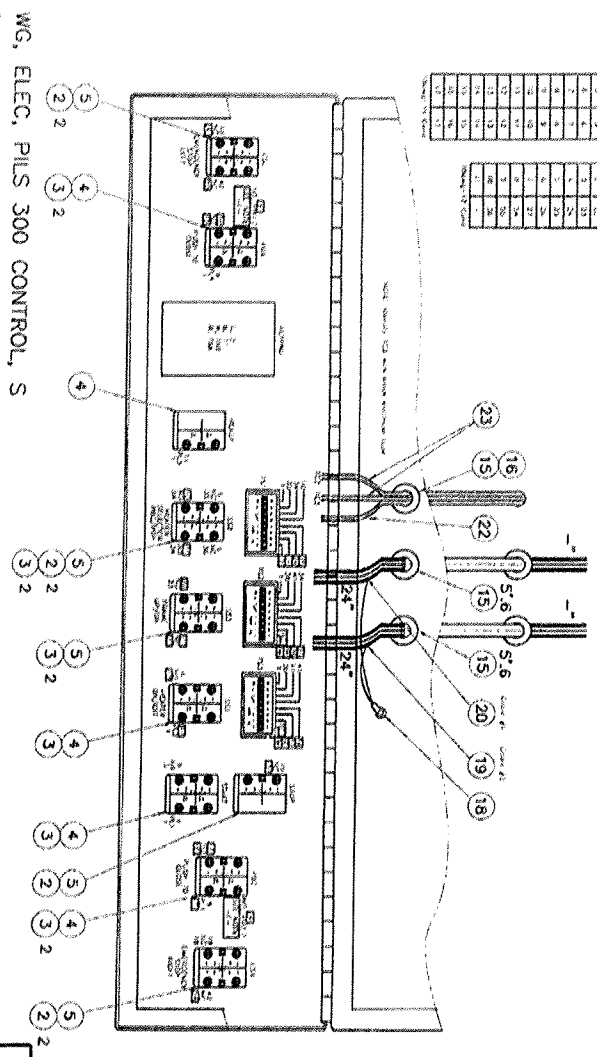
Parts List for Drawing 50060- Rev. B

Item	Quantity	Part No.	Description
1			
2	7	44600-CB1NC	CONTACT BLOCK, 1 N.C., 2X
3	10	44600-CB1NO	CONTACT BLOCK, 1 N.O., 2X
4	5	44600-LM024	SWITCH, 22MM LAMP/MTL 24V 2ACROSS
5	5	44600-MTL2A	SWITCH, 22MM MTL 2 ACROSS
6	1	44601-MSTOP	SWITCH, 22MM PUSH STOP
7	2	44601-PTR40	SWITCH, 22MM PUSH/TWIST RED MUSH.
8	1	44602-2PMIA	SWITCH, 22MM SEL 2POS ILLUM AMBER
9	1	44602-3PSBK	SWITCH, 22MM SELE 3POS SPR RT
10	1	50061	LABEL, PILS 300, CONTROL STANDARD
11	1	50062	ENC, PILS 300 CONTROL
12	1	66574	SWITCH, 22MM PUSH-GREEN ILLUM FLUSH
13	2	66575	SWITCH, 22MM PUSH-BLUE ILLUM
14	1	66591	SWITCH, 22MM SELE 3POS
15	3	66889	CORDGRIP, PG-16, .394-.551 W/NUT
16	1	66914	CORDGRIP, PG-16, 3X4MM INSERT
17	1	66968	PILOT LAMP, GREEN 22.5MM
18	1	67115	TERMINAL, RING, 12-10 AWG, SZ 1/4"
19	5.6	67645	CABLE, 18-12, CONTROL
20	5.6	67646	CABLE, 18-18, CONTROL
21	3	67312	TEMP CONTROL 24V, 1/32DIN, C
22	1	67786	KEYPAD, VFD, LENZE WITH CABLE
23	2	67802	THERMOCOUPLE, J TYPE, #6 RING
24			
25	4	A3854	WIRE, 16AWG, RED, MTW
26	2	B2071	LOCKNUT, CONDUIT - 1/2"
27			
28			
29			
30	REF	18088	COUNTER, SELF POWERED



NOTE:
 1- ALL WIRING MUST BE DONE IN ACCORDANCE WITH THE NATIONAL ELECTRICAL CODE.
 2- ALL CONNECTIONS SHOULD BE MADE TO THE TERMINALS SHOWN ON THIS PANEL.
 3- ALL CONNECTIONS SHOULD BE MADE TO THE TERMINALS SHOWN ON THIS PANEL.
 4- ALL CONNECTIONS SHOULD BE MADE TO THE TERMINALS SHOWN ON THIS PANEL.
 5- ALL CONNECTIONS SHOULD BE MADE TO THE TERMINALS SHOWN ON THIS PANEL.

Terminal	Wiring	Terminal	Wiring
1	...	11	...
2	...	12	...
3	...	13	...
4	...	14	...
5	...	15	...
6	...	16	...
7	...	17	...
8	...	18	...
9	...	19	...
10	...	20	...
11	...	21	...
12	...	22	...
13	...	23	...
14	...	24	...
15	...	25	...
16	...	26	...
17	...	27	...
18	...	28	...
19	...	29	...
20	...	30	...
21	...	31	...
22	...	32	...
23	...	33	...
24	...	34	...
25	...	35	...
26	...	36	...
27	...	37	...
28	...	38	...
29	...	39	...
30	...	40	...
31	...	41	...
32	...	42	...
33	...	43	...
34	...	44	...
35	...	45	...
36	...	46	...
37	...	47	...
38	...	48	...
39	...	49	...
40	...	50	...



SHEET 1 OF 1	DATE 10/01	REV B	REV DATE 10/03	ISSUING ENGINEER S0060	DATE 120
-----------------	---------------	----------	-------------------	---------------------------	-------------



REV: _____ DATE: _____

