

CATALOG NO.

PT0802

First Edition

STYLES

4000A

4000B

INSTRUCTIONS AND
ILLUSTRATED PARTS LIST

INSTRUCCIONES Y
LISTADO ILUSTRADO DE PARTES



CLASS 4000 SERIES,
PORTABLE BAG CLOSING MACHINES
CLASE SERIE 4000
MAQUINA CERRADORA DE SACOS, PORTATIL



INPAK SYSTEMS, INC.

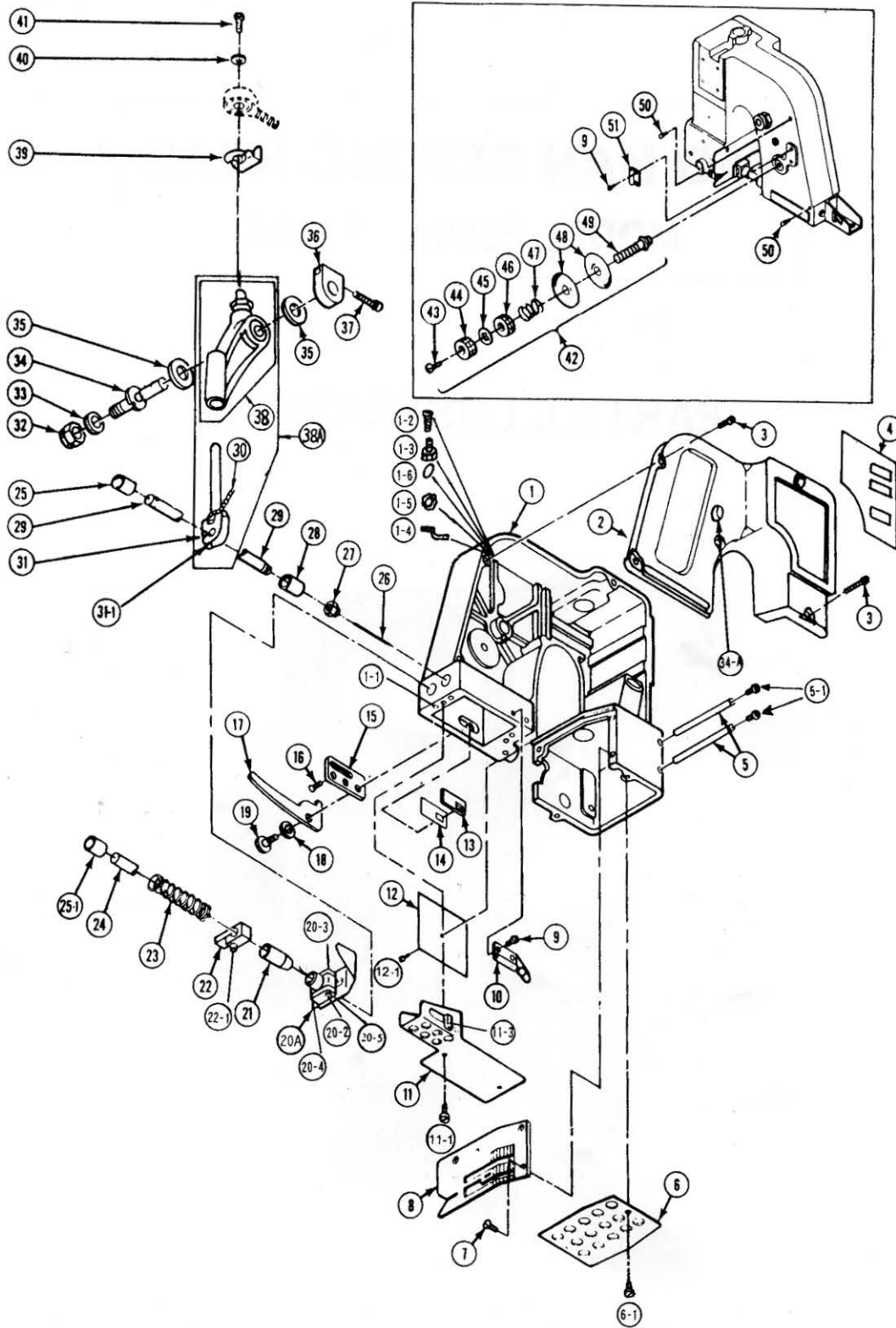
540 Tasman Street, Madison, WI 53714

Ph: 608-221-8180 Fax; 608-221-4473

Email: info@inpaksystems.com

Web: www.inpaksystems.com

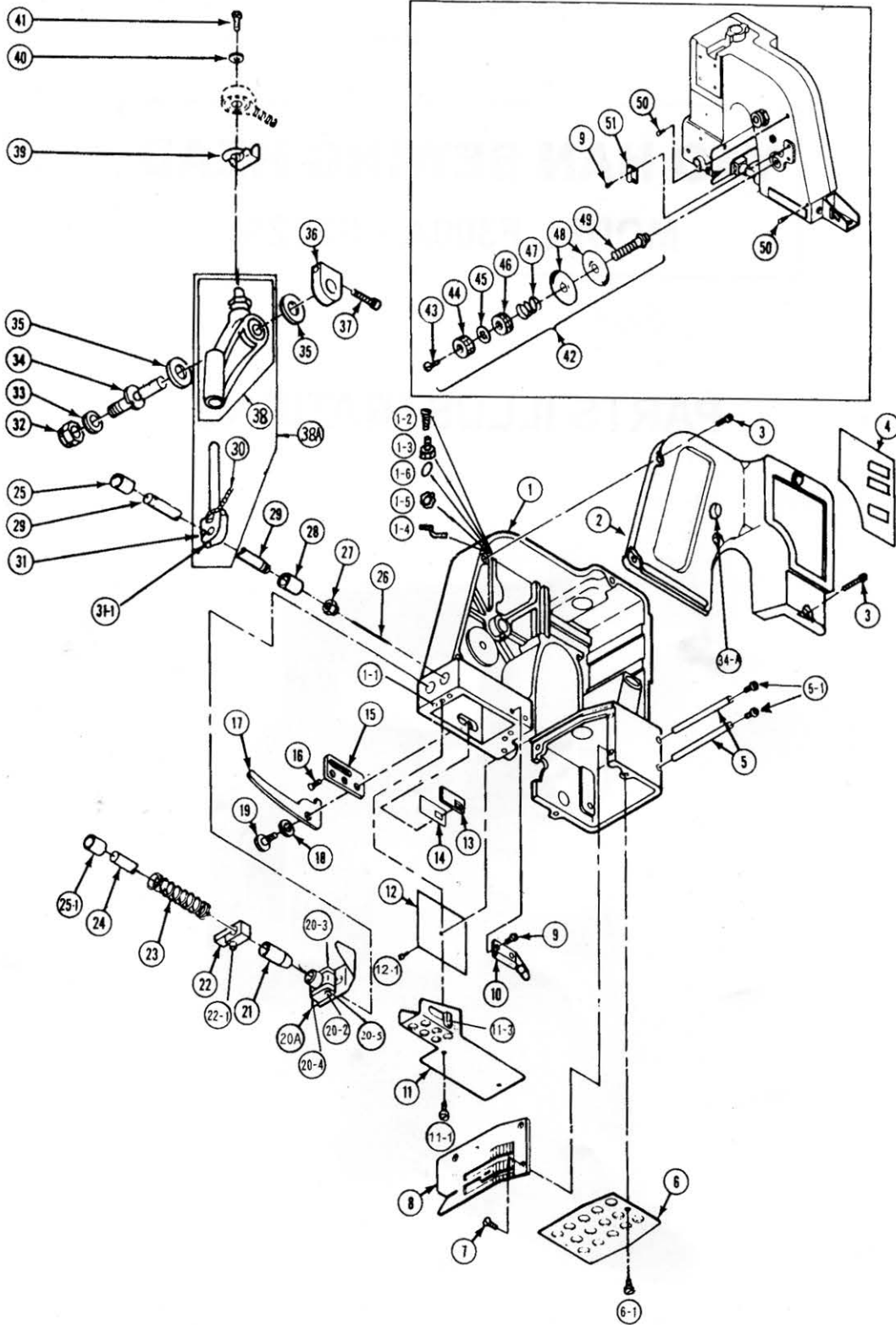
02/08/10



HOUSING, NEEDLE LEVER, PRESSER FOOT & THROAT PLATE PARTS

Ref. No.	Part No.	Description	Amt. Req.
1.	--	Housing Assembly (Not available).....	1
1-1.	4001201-1	Set Screw, #8-32N.C. X 3/16".....	8
1-2.	4001201-2	Spring.....	1
1-3.	4001201-3	Joint.....	1
1-4.	4001201-4	Oil pipe.....	1
1-5.	4001201-5	Nut.....	1
1-6.	4001201-6	Washer.....	1
2.	--	Cover(Not available).....	1
3.	4001203	Screw, #8-32N.C. X 5/8".....	6
4.	--	Plate (Not available).....	1
5.	4001205	Stud, Feed Dog carrie slide.....	1
5-1.	4001205-1	Screw, button head #10-32N.F X 1/4".....	4
6.	4001206	Cover, Looper.....	1
6-1.	4001206-1	Stud, Looper cover.....	1
7.	4001207	Screw, flathead, #6-40N.E X 3/8".....	3
8.	4001208	Throat Plate.....	1
9.	4001209	Screw, #6-32N.C. X 3/16".....	4
10.	4001210	Tube, Thread Guide (Front).....	1
11.	4001211	Guard, Needle Bar.....	1
11-1.	4001211-1	Screw, #8-32N.C. X 1/4".....	3
12.	4001212	Cover plate.....	1
12-1.	4001212-1	Screw, #10-32N.E. X 1/4".....	1
13.	4001213	SlidePad Cover.....	1
14.	4001214	Slide Pad.....	1
15.	4001215	Lever Plate.....	2
16.	4001216	Screw, #8-32N.C. X 5/16".....	1
17.	4001217	Lifter Lever, Presser Foot.....	1
18.	4001218	Washer, Spring.....	1
19.	4001219	Screw, Pivot.....	1
20.	4001220A	Presser Foot Assembly.....	1
20-2.	4001220A-2	Hinging Bolt.....	1
20-3.	4001220A-3	Nut.....	1
20-4.	4001220A-4	Screw, #8-32N.C. X 3/16".....	1
21.	4001221	Bushing, (lower).....	1
22.	4001222	Lifter, Presser Foot.....	1
22-1.	4001237	Screw, #6-40N.F. X 1/2".....	1
23.	4001223	Spring, Presser Bar.....	2
24.	4001224	Presser Bar.....	1
25.	4001225	Bushing, Needle Bar (upper).....	1
25-1.	4001225-1	Bushing, Presser Bar (upper).....	1
26.	--	Needle.....	1
27.	4001227	Nut, Needle Bar.....	1
28.	4001228	Bushing, Needle Bar (lower).....	1
29.	4001229	Needle Bar.....	1
30.	4001230	Oil Felt.....	1
31.	4001231	Clamp Assembly, Needle Bar.....	1
31-1.	4001466-1	Screw.....	2
32.	4001232	Lock Nut (Nylok Special) 3/8" X 24 N.C.....	1
33.	4001233	Washer, Flat.....	1
34.	4001234	Pivot Pin.....	1
34-1.	4001234-1	Bushing.....	1
35.	4001235	Washer, Thrust for Needle Lever.....	5
36.	4001236	Pivot Clamp, Needle.....	1
37.	4001237	Screw, #6-40N.F. X 5/8".....	1

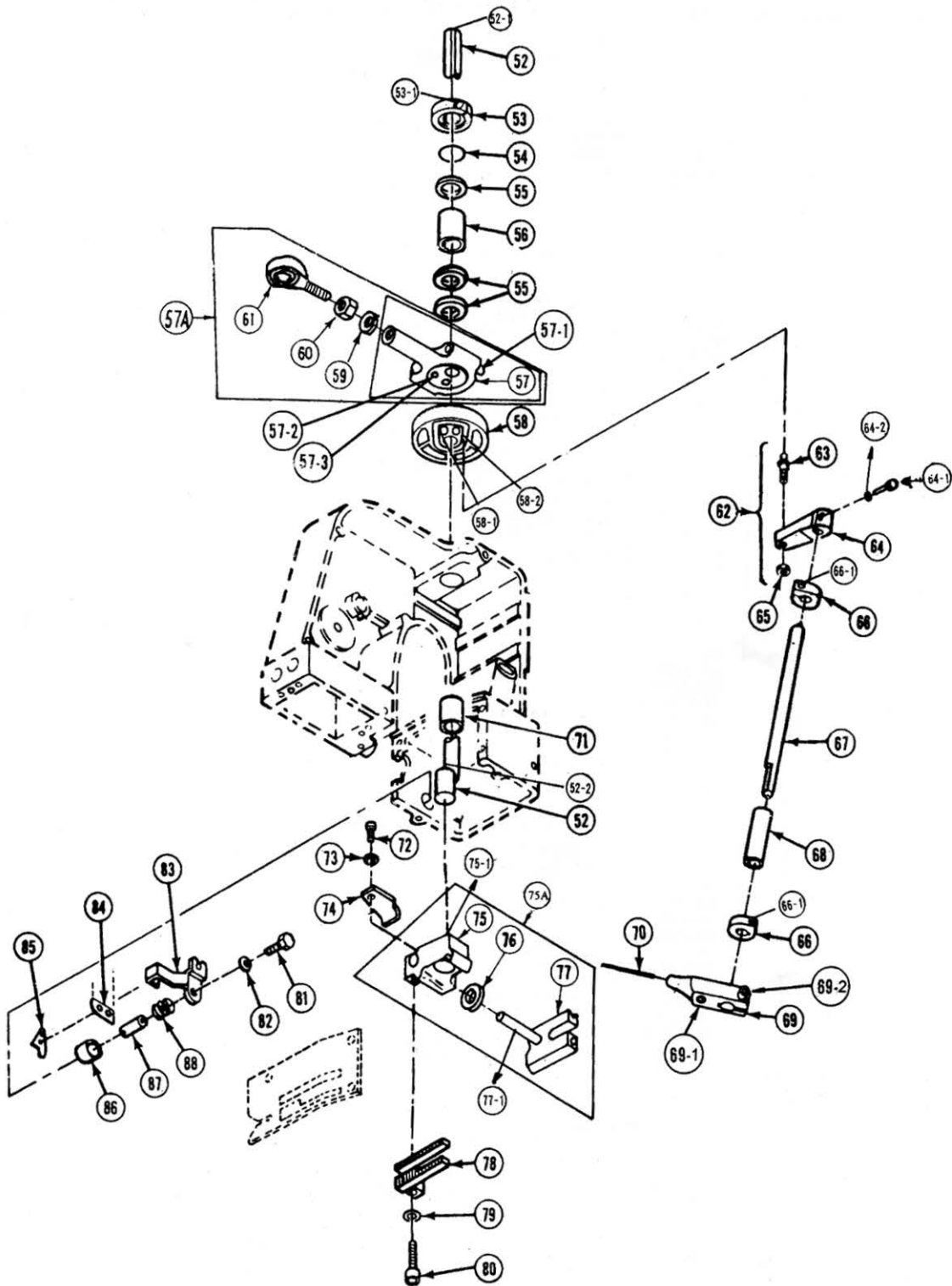
38. thru 51. See following page.



HOUSING, NEEDLE LEVER, PRESSER FOOT & THROAT PLATE PARTS (CONT'D)

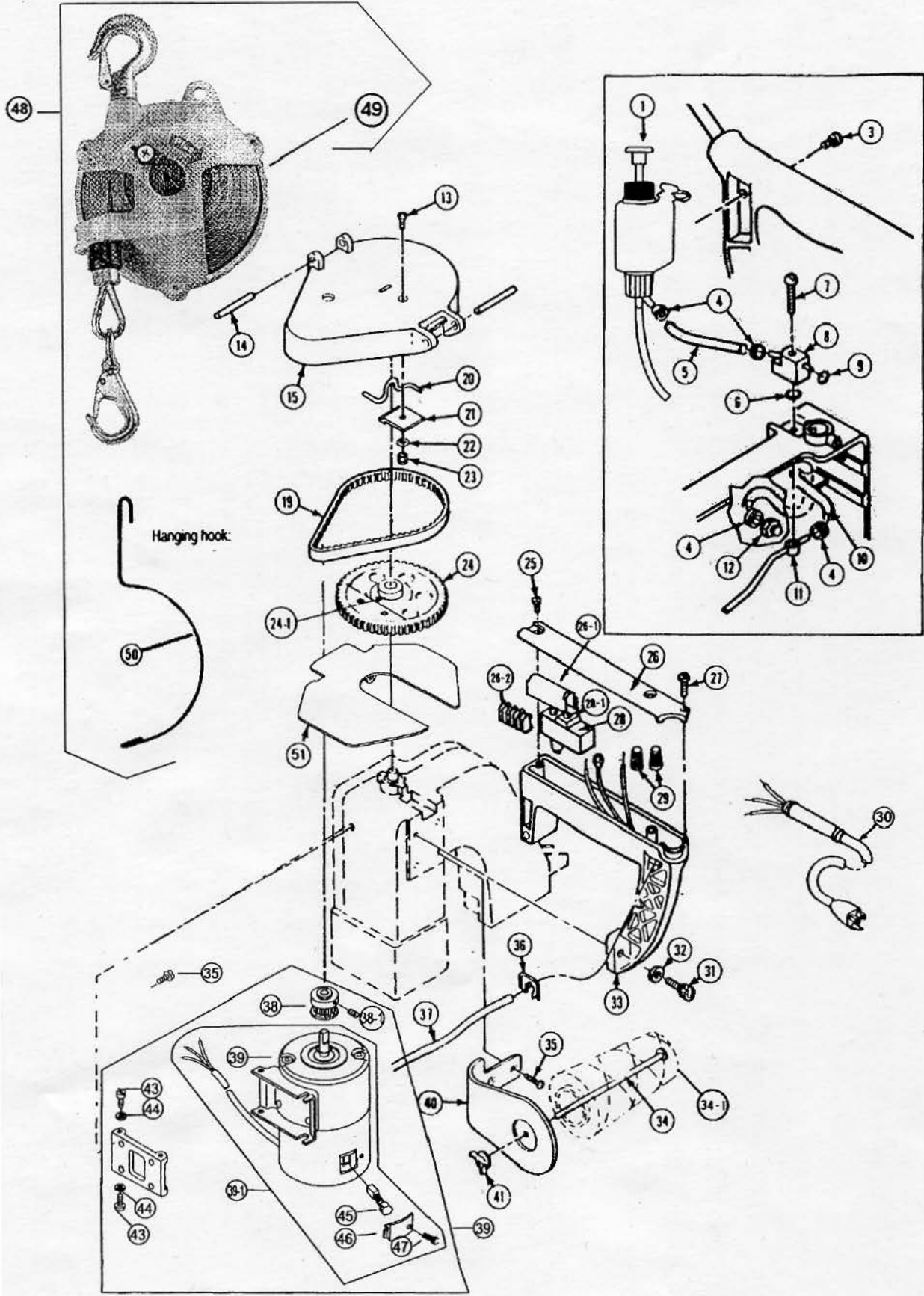
Ref. No.	Part No.	Description	Amt. Req.
38.	4001238	Needle Bar Lever Clamp Assenmbly.....	1
38A.	4001238A	Needle BarLever Clamp Assembly with Clamp.....	1
39..	4001239	Spring.....	1
40..	4001240	Flat Washer.....	1
41..	4001241	Screw, #10-32N.F. X 1/2".....	1
42..	4001242	Tension Assembly Complete.....	1
43..	4001207	Screw, #6-40N.F. X 3/8".....	1
44..	4001244	Tension Nut (upper).....	1
45..	4001245	Lock Washer for Tension.....	1
46..	4001246	Tension Nut (lower).....	1
47..	4001247	Tension Spring.....	1
48..	4001248	Tension Disc.....	2
49..	4001249	Tension Stud.....	1
50..	4001250	Eyelet, Thread Pull Off.....	2
51..	4001251	Tube, Thread Guide (rear).....	1


INPAK SYSTEMS, INC.
 BAGGING EQUIPMENT SPECIALISTS
 540 TASMAN STREET • MADISON, WI 53714
 PH 608-221-8180 Fax 608-221-4473
www.inpaksystems.com



MAIN SHAFT & LOOPER ASSEMBLY PARTS

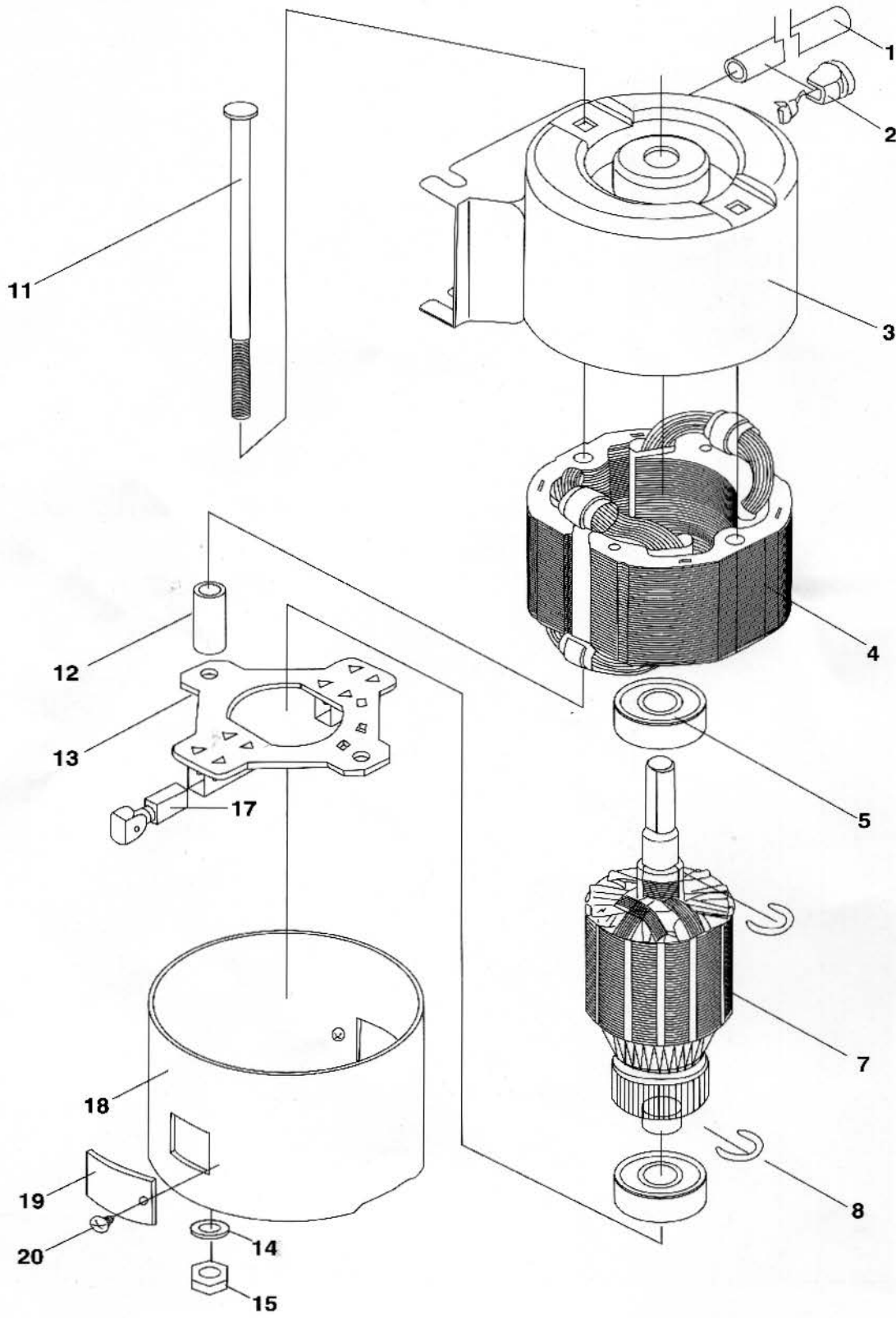
Ref. No.	Part No.	Description	Amt. Req.
52..	4001452	Mainshaft.....	1
52-1-	4001452-1	Screw.....	1
52-2..	4001452-2	Oil Felt.....	1
53..	4001453	Collar, Mainshaft.....	1
53-1..	4001453-1	Screw, #5-40N.C. X 3/8".....	1
54..	4001454	"O" Ring.....	1
55..	4001455	Washer, thrust.....	3
56..	4001456	Bushing, Mainshaft (rear).....	1
57A..	4001457A	Connecting Rod & Eccentric Assembly with Bearing Rod Ends.....	1
57..	4001457	Connecting Rod & Eccentric Assembly.....	1
57-1..	4001480	Screw.....	1
57-2..	4001457-2	Screw, (cone point).....	1
57-3..	4001457-3	Screw (flat point).....	1
58..	4001458	Cam Looper Assembly.....	1
58-1..	4001458-1	Screw, #10-32N.F. X 5/8" (cone point).....	1
58-2..	4001458-2	Screw, #10-32N.F. X 1/2".....	1
59..	4001459	Washer, Internal tooth, 5/16".....	1
60..	4001460	Nut, Hex Head.....	1
61..	4001461	Bearing, Rod End.....	1
62..	4001462	Arm & Stud Cam Follower Assembly.....	1
63..	4001463	Cam Follower Stud.....	1
64..	4001464	Cam Follower Arm.....	1
64-1..	4001464-1	Screw, #5-40N.C. X 5/8".....	1
64-2..	4001464-2	Washer, Flat.....	1
65..	4001465	Nut, Hex Head.....	2
66..	4001466	Collar, Looper Shaft.....	2
66-1..	4001466-1	Screw, #5-40N.C. X 1/2".....	2
67..	4001467	Shaft, Looper.....	1
68..	4001468	Bushing, Looper Shaft.....	1
69..	4001469	Looper Holder.....	1
69-1..	4001469-1	Screw, #8-32N.C. X 3/16".....	1
69-2..	4001469-2	Screw, #5-40N.C. X 1/4".....	2
70..	4001470	Looper.....	1
71..	4001471	Bushing, Mainshaft (front).....	1
72..	4001472	Screw, #8-32N.C. X 5/16".....	1
73..	4001473	Washer, internal tooth #8.....	1
74..	4001474	Angle Clip.....	1
75A..	4001475A	Carrier Block Assembly with Slide.....	1
75..	4001475	Carrier Block, Feed Dog.....	1
75-1..	4001475-1	Screw, #6-40N.F. X 3/8".....	1
76..	4001476	Washer, Felt.....	1
77..	4001477	Slide.....	1
77-1..	4001477-1	Knife Slide.....	1
78..	4001478	Feed Dog.....	1
79..	4001479	Washer, Flat #8.....	1
80..	4001480	Screw, #8-32N.C. X 1.....	1
81..	4001481	Screw, #10-32N.F. X 3/8".....	1
82..	4001482	Washer, Lock #10.....	1
83..	4001483	Bracket, Knife.....	1
84..	4001484	Knife, Stationary.....	1
84-1..	4001484-1	Screw, #3-48N.C. X 5/16".....	1
85..	4001485	Knife, Moving.....	1
85-1..	4001485-1	Screw, #3-48N.C. X 3/16".....	1
86..	4001486	Bushing, Knife Shaft.....	1
87..	4001487	Shaft, Knife.....	1
88..	4001488	Spring, Knife Tension.....	1



HANDLE & ELECTRIC DRIVE PARTS

Ref. No.	Part No.	Description	Amt. Req.
1.	4001601	Oil Pump Assembly.....	1
3.	4001603	Screw, #8-32N.C. X 1/2".....	1
4.	4001604	Spring, Garter.....	4
5.	4001605	Tubing, Oil Pump (4X6X10.5).....	1
5-1.	4001605-1	Tubing, Oil Pump (4X6X20.5).....	1
6.	4001606	"O" Ring.....	1
7.	4001607	Screw, #8-32N.C. X 1/4".....	1
8.	4001608	Manifold, Outside.....	1
9.	4001609	"O" Ring.....	1
10.	4001610	Tubing, (4X6X11.5).....	1
11.	4001611	Weldment, Manifold (inside).....	1
12.	4001612	Fitting, Barbed.....	1
13.	4001216	Screw, #8-32N.C. X 5/16".....	1
14.	4001614	Pin, Spring (1/4" Dia X 1/2").....	2
15.	4001615	Guard, Belt.....	1
19.	4001619	Belt.....	1
20.	4001620	Hanger.....	1
21.	4001621	Clip, Hanger.....	1
22.	4001473	Washer, Internal Tooth #8.....	1
23.	4001623	Nut, Hex #8-32N.C.....	1
24.	4001624	Pulley.....	1
24-1.	4001624-1	Screw, #10-32N.F. X 3/8".....	2
25.	4001625	Screw, #10-32N.F. X 3/8".....	1
26.	4001626	Cover, Handle.....	1
26-1.	4001626-1	Micro Switch.....	1
26-2.	4001626-2	Flexible Terminal block.....	1
27.	4001627	Screw, #4-4-NH.C. X 3/8".....	1
28.	4001628	Switch.....	1
28-1.	4001628-1	End Plug.....	1
29.	4001629	Wire Nut.....	2
30.	4001630	Cord, Set for 110V.....	1
30-3.	4001630-3	Cord, Set for 220V.....	1
31.	4001631	Screw, 1/4-20N.C. X 3/4".....	2
32.	4001632	Washer, Spring 1/4".....	1
33.	4001633	Handle.....	1
34.	4001634	Bolt, Thread Clamping.....	1
34-1.	USST0.5	Thread.....	1
35.	4001635	Screw, #10-32N.F. X 3/8".....	1
36.	4001636	Stain Relief.....	1
37.	4001637	Motorlead-3 Wire SJO.....	1
38.	4001638	Motor Pulley.....	1
38-1.	4001638-1	Screw.....	1
39	4001639	Universal Motor Assembly (110V).....	1
-	4001639-1	Universal Motor Assembly (220V).....	1
39-1.	4001639M	Universal Motor (110V).....	1
-	4001639-1M	Universal Motor (220V).....	1
40.	4001640	Thread Stand Base.....	1
41.	4001641	Wing Nut, 1/4-20N.C.....	1
42.	4001642	Hinge Motor Mount Assembly.....	4
43.	4001643	Screw.....	2
44.	4001644	Washer for Motor.....	1
45.	4001645	Carbon Brush for AC Motor (size:6X8X15).....	1
46.	4001646	Cap for Motor.....	1
47.	4001647	Screw with Washer.....	1
48.	90191M2	Spring Balancer Complete (Extra Send and Charge Item).....	1
49.	90191M1	Spring Balancer (Extra Send and Charge Item).....	1
50.	90191MA	Hanging Hook for Spring Balancer (Extra Send and Charge Item).....	1
51.	G4001615A	Belt Guard.....	1

MOTOR PARTS



MOTOR PARTS PARTS

Ref. No.	Part No.	Description	Amt. Req.
1.	4002601	Cord	1
2.	4002602	Strain Relief Busings.....	1
3.	4002603	Case A.....	1
4.	4002604	Stator Assembly for 110V.....	1
	4002604-1	Stator Assembly for 220V.....	1
5.	4002605	Ball Bearing.....	1
7.	4002607	Armature Assembly for 110V.....	1
	4002607-1	Armature Assembly for 220V.....	1
8.	4002608	C-Ring.....	1
11.	4002611	Screw.....	1
12.	4002612	Pipe.....	1
13.	4002613	PC Plate.....	1
14.	4002614	Washer.....	1
15.	4002615	Nut	1
17.	4001645	Carbon Brush for AC Motor.....	1
18.	4002618	Case B.....	1
19.	4001646	Cap for Motor.....	1
20.	4001647	Screw	1


INPAK SYSTEMS, INC.
 BAGGING EQUIPMENT SPECIALISTS
 540 TASMAN STREET • MADISON, WI 53714
 PH 608-221-8180 Fax 608-221-4473
www.inpaksystems.com